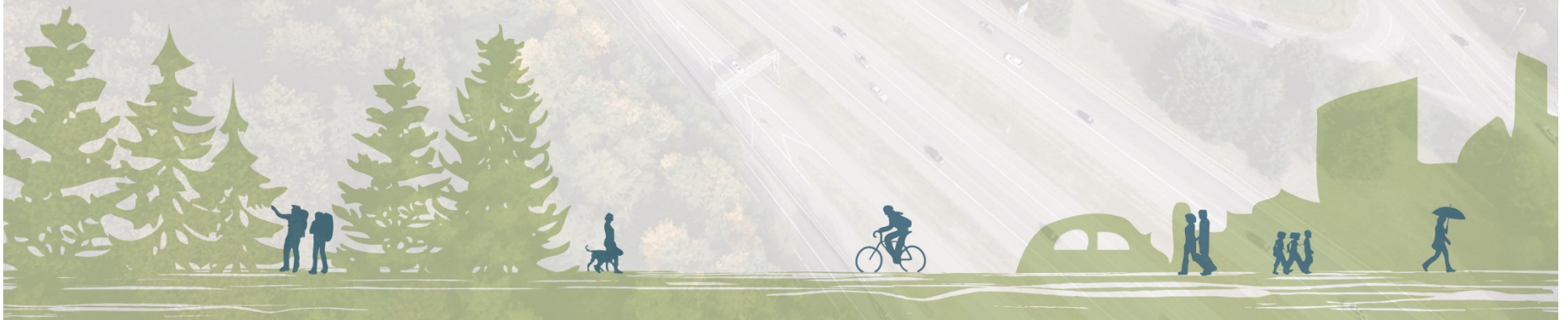




CITY OF BELLEVUE
TRANSPORTATION DEPARTMENT

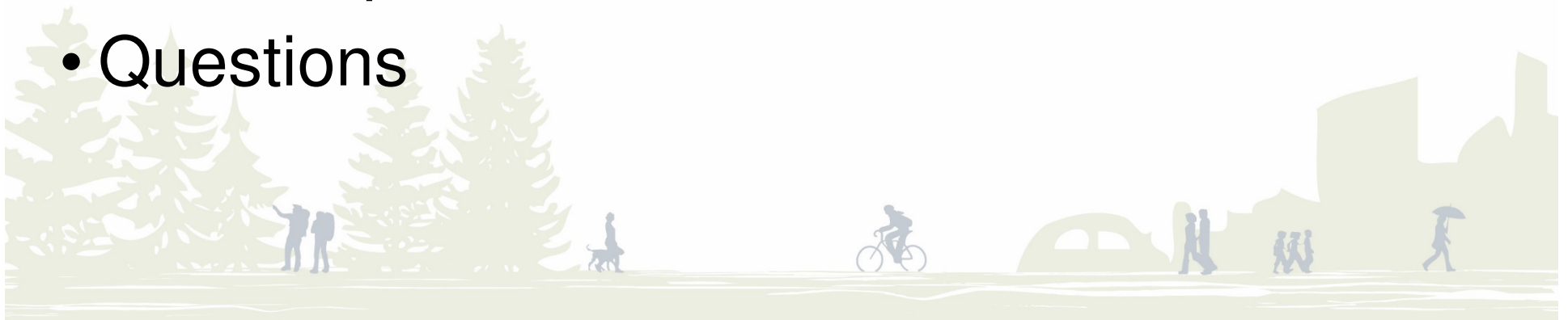
MOUNTAINS TO SOUND GREENWAY TRAIL **UPDATE**

Transportation Commission Meeting – September 10, 2015
Presented by Chris Masek, PE

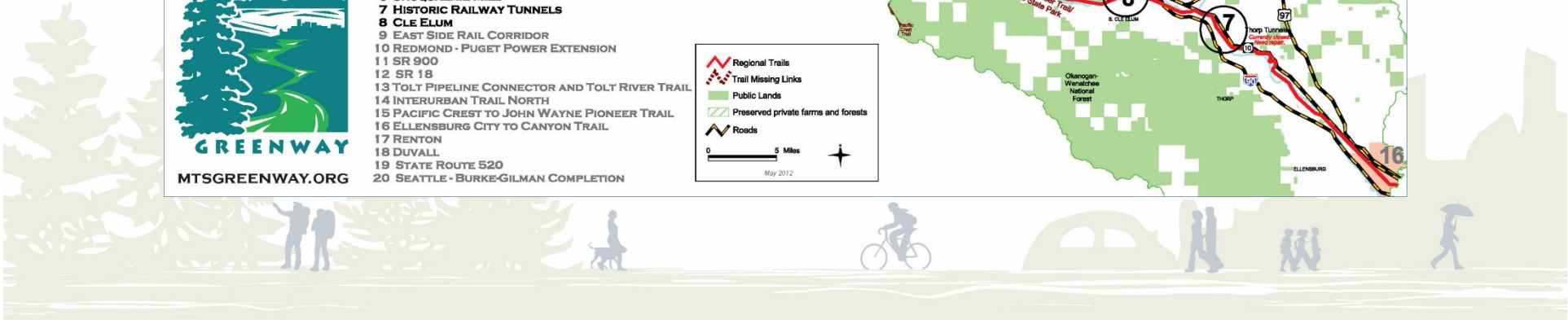
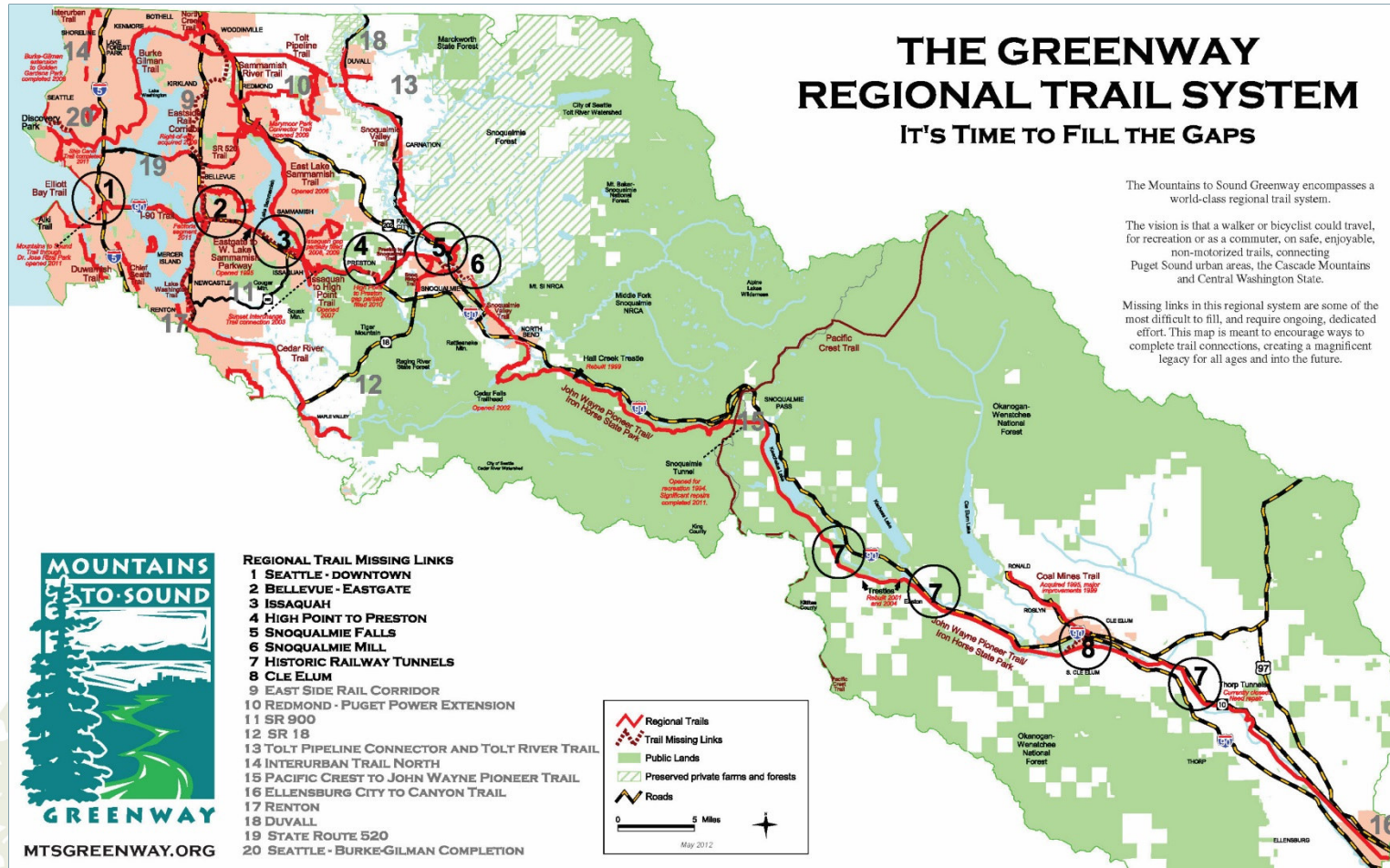


Overview

- Mountains to Sound Greenway Trail System Overview
- Previously Completed Work
- Proposed Trail Overview and Status
- Cost Estimate Summary
- Next Steps
- Questions



Greenway Trail Regional Map



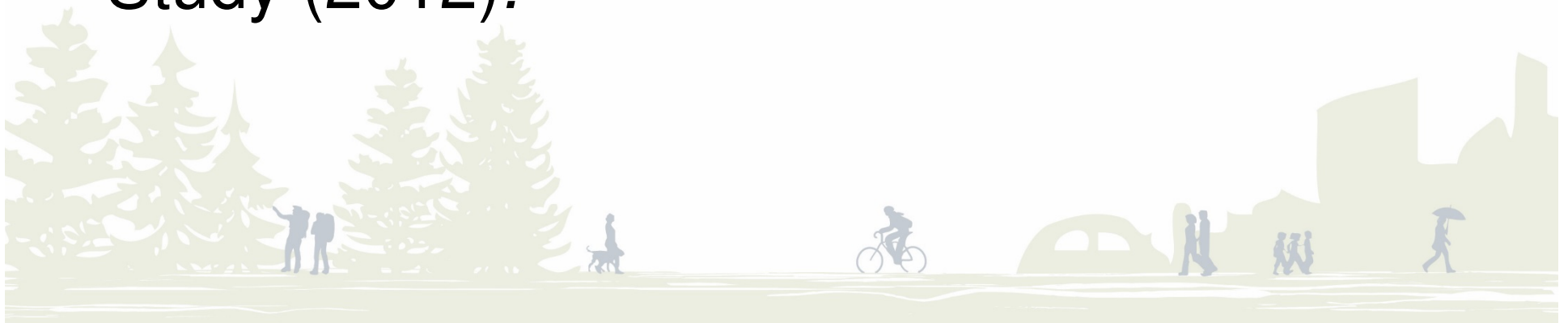
Greenway Trail Overview

- 100+ Mile Regional Trail System connecting the Seattle waterfront and Ellensburg
- Connects the built and natural environment
- Managed by the Mountains to Sound Greenway Trust
- A 3.6 Mile Gap in Mountains to Sound Greenway Trail exists within the City of Bellevue.



Previously Completed Work

- Eastgate/I-90 Land Use and Transportation Project (2011/2012)
- Outreach Bike Ride and Summary Report (2011)
- Mountains to Sound Greenway Trail Design Study (2012).



Stakeholders

Agencies/Institutions:

- WSDOT
- Mountains to Sound Greenway Trust
- King County Metro
- Bellevue College

Businesses/Companies:

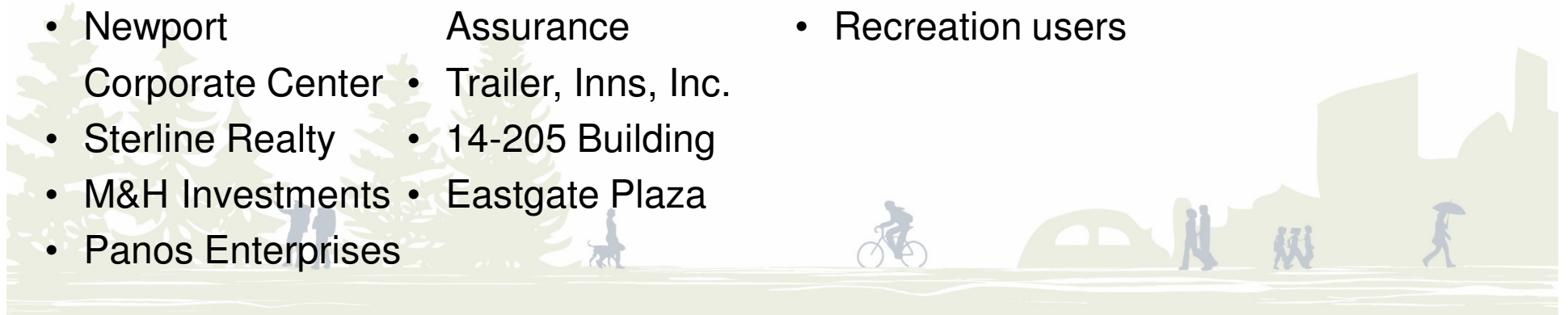
- Factoria Village
- Bellevue Honda
- T-Mobile
- Newport Corporate Center
- Sterline Realty
- M&H Investments
- Panos Enterprises
- Paccorp Center
- Group Health
- Sun Life Assurance
- Trailer, Inns, Inc.
- 14-205 Building
- Eastgate Plaza

Bellevue Citizens/Property Owners:

- Adjacent property owners
- Residents within 1/2 mile of the project limits
- Other community associations

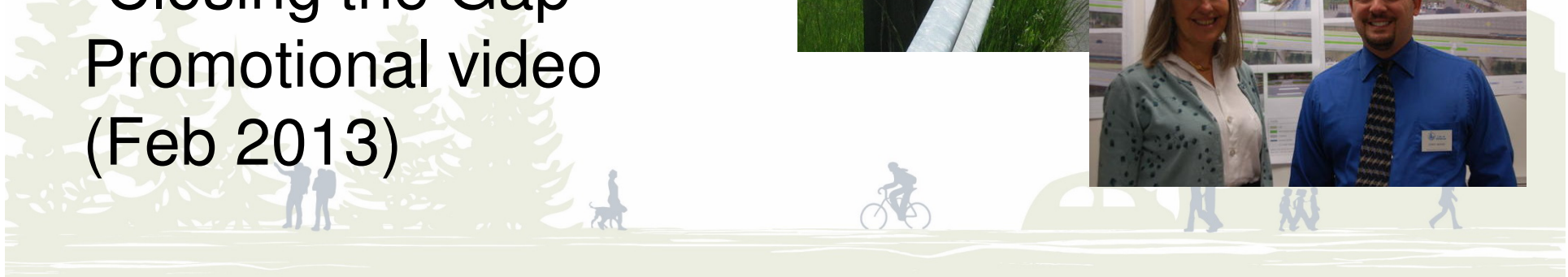
Other Potentially Affected Interests:

- Bicyclists
- Cascade Bicycle Club
- Pedestrians
- Recreation users

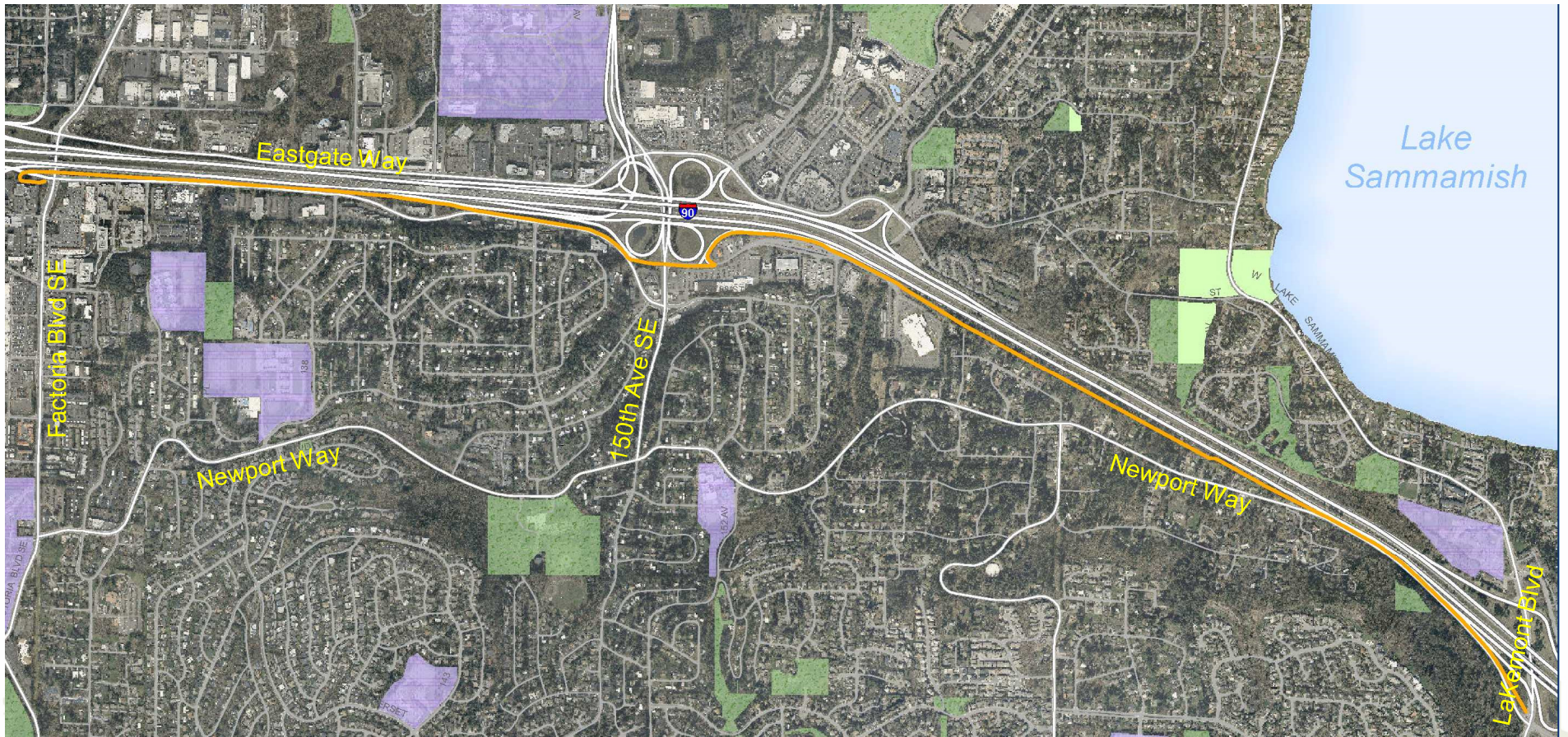


Public Outreach Effort

- Project signs & website
- Bicycle outreach (2011)
- Newsletters
- Three open houses
(Two held on 9/26/12 and one held on 6/24/15)
- “Closing the Gap” Promotional video (Feb 2013)

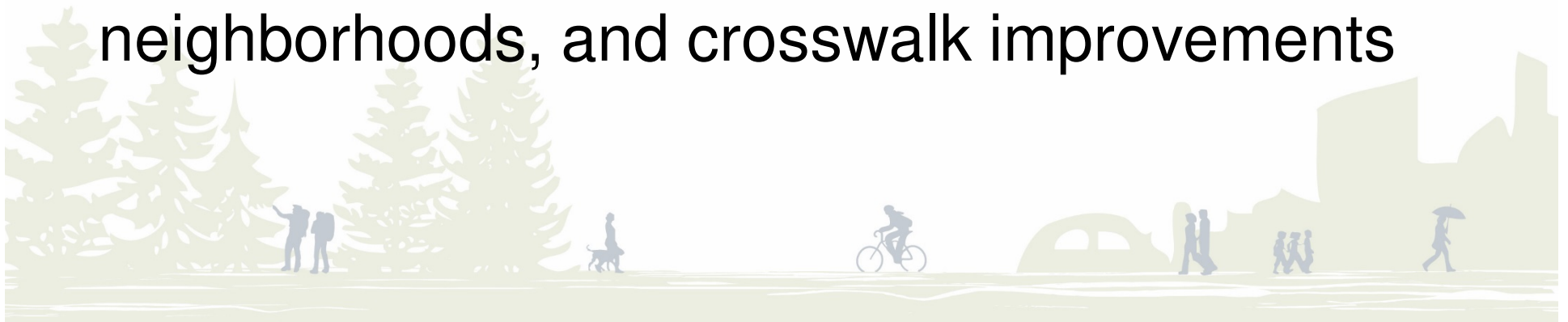


Selected Trail Alignment

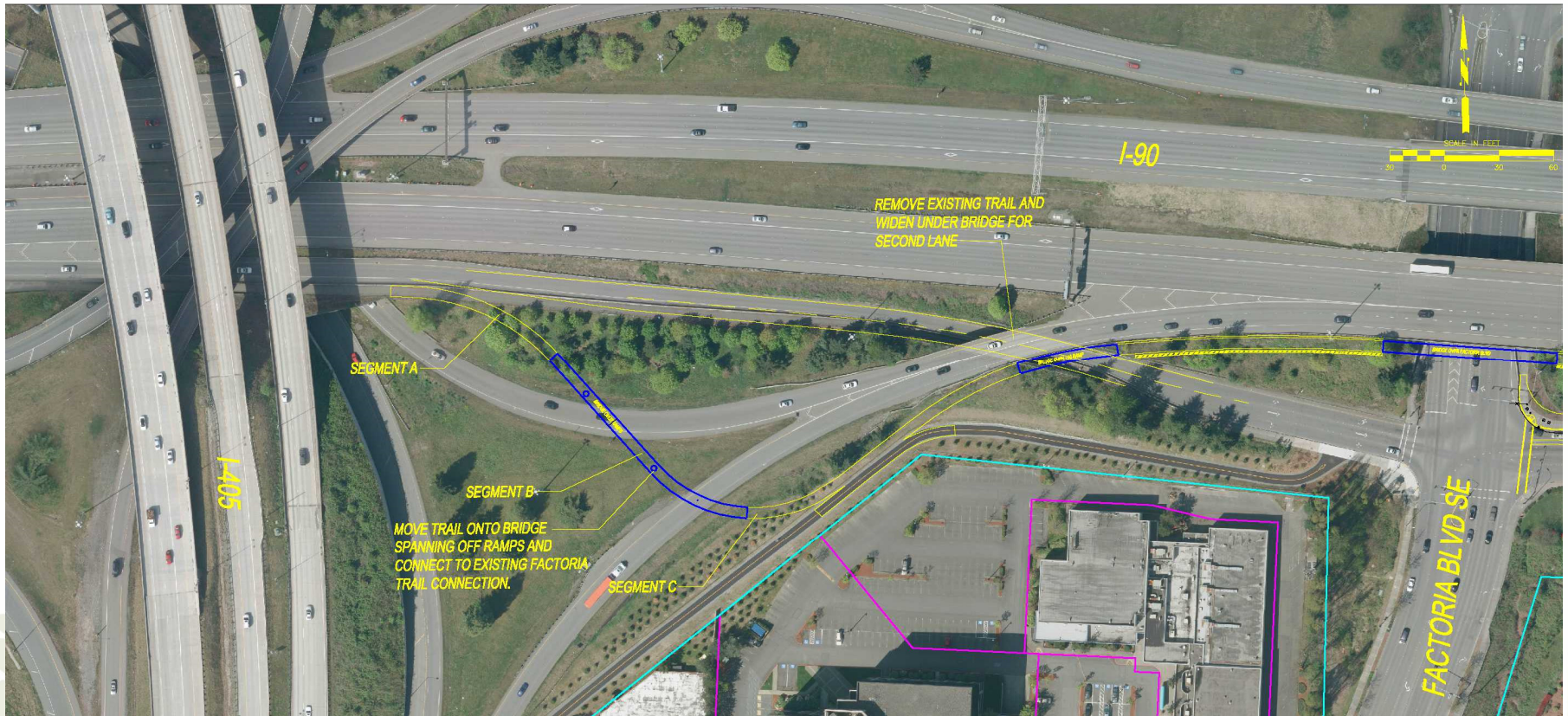


Trail Typical Cross Section

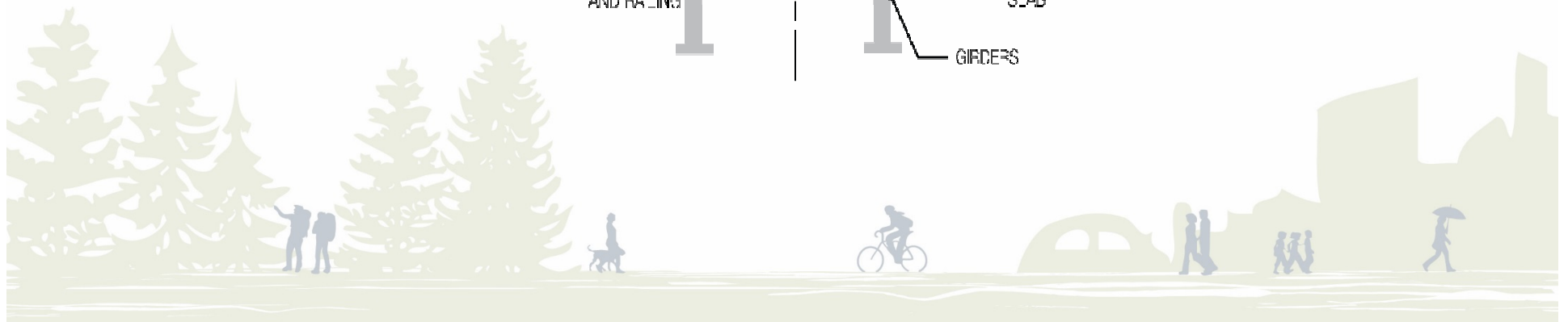
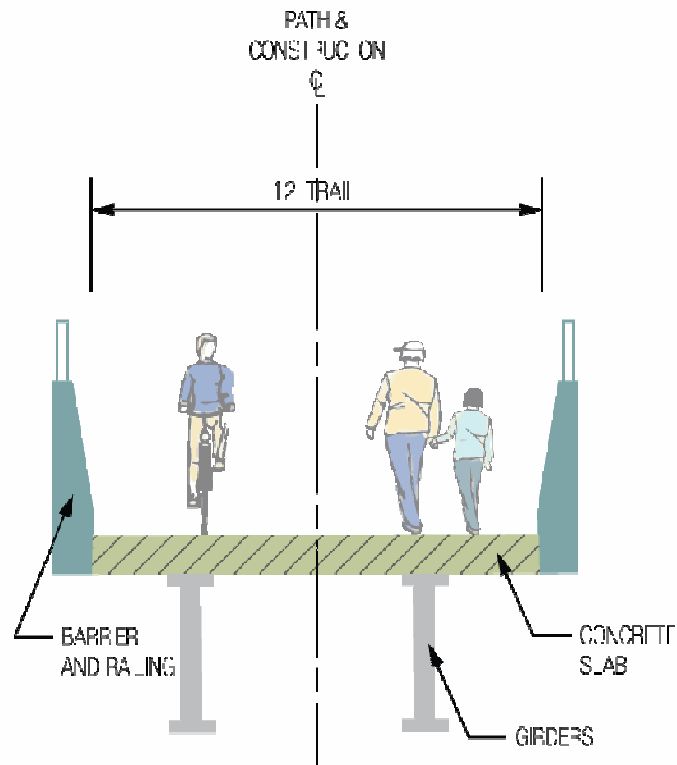
- 12 ft. wide paved pedestrian & bicycle trail
- 4 ft. min. planter when trail is adjacent to roadway
- Pervious Asphalt will be used where feasible
- Trail amenities also include landscaping, rest stops, wayfinding signage, connections to neighborhoods, and crosswalk improvements



Greenway Trail: I-405 to Factoria Blvd SE



Trail Section: I-405 to Factoria Blvd SE

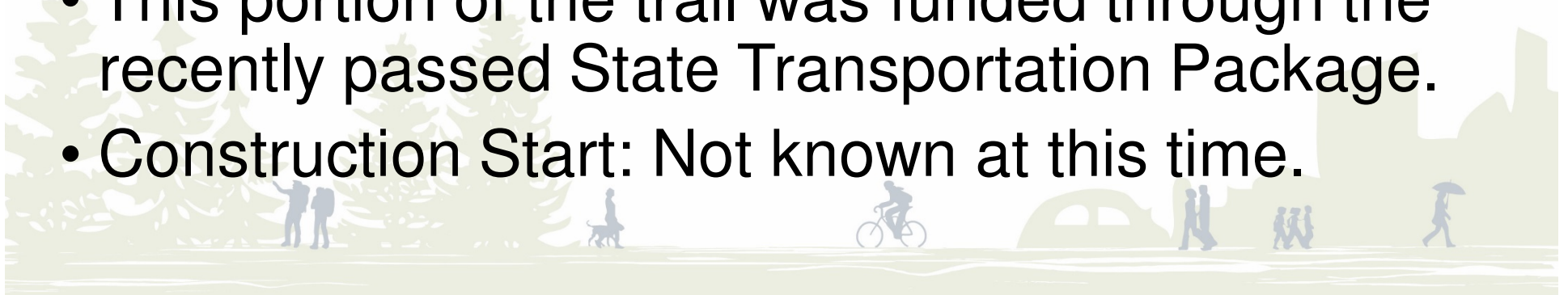


Visualization of Trail Bridge Crossing over Factoria Blvd

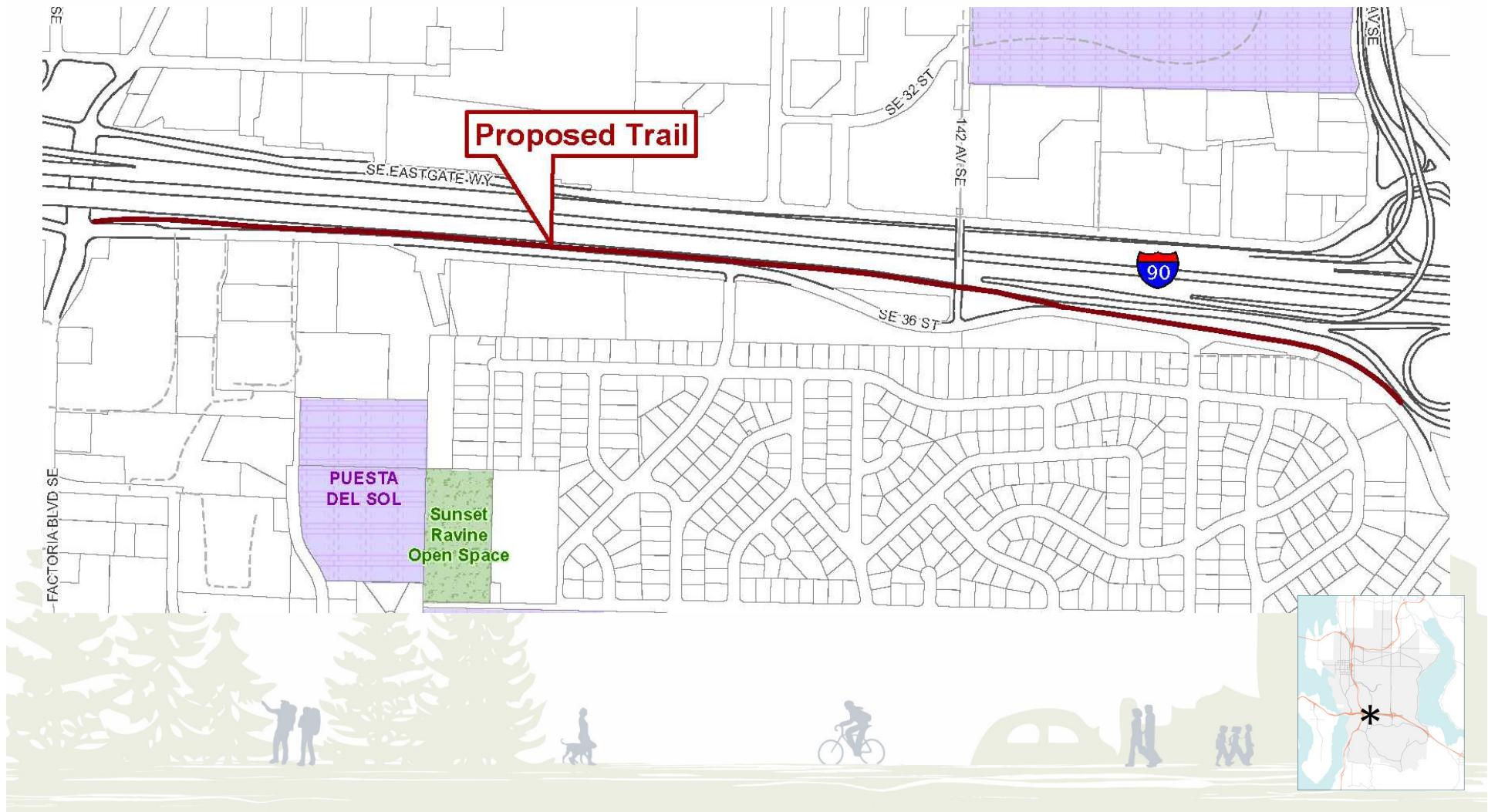


Greenway Trail: I-405 to Factoria Blvd SE

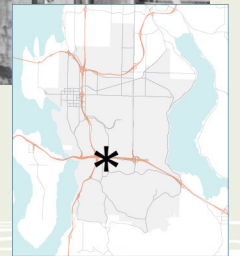
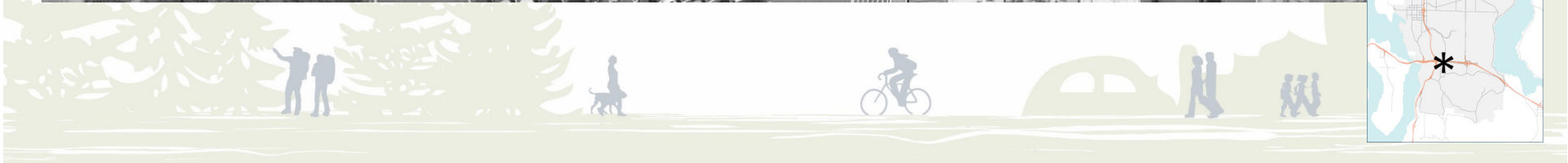
- Design to begin in October 2015 and will be completed by the end of 2016.
- Includes three bridge structures and 1200 feet of new trail.
- Includes Offramp work from I-90 to Factoria to improve ramp capacity by moving the trail
- Cost Estimate: \$6,487,708
- This portion of the trail was funded through the recently passed State Transportation Package.
- Construction Start: Not known at this time.



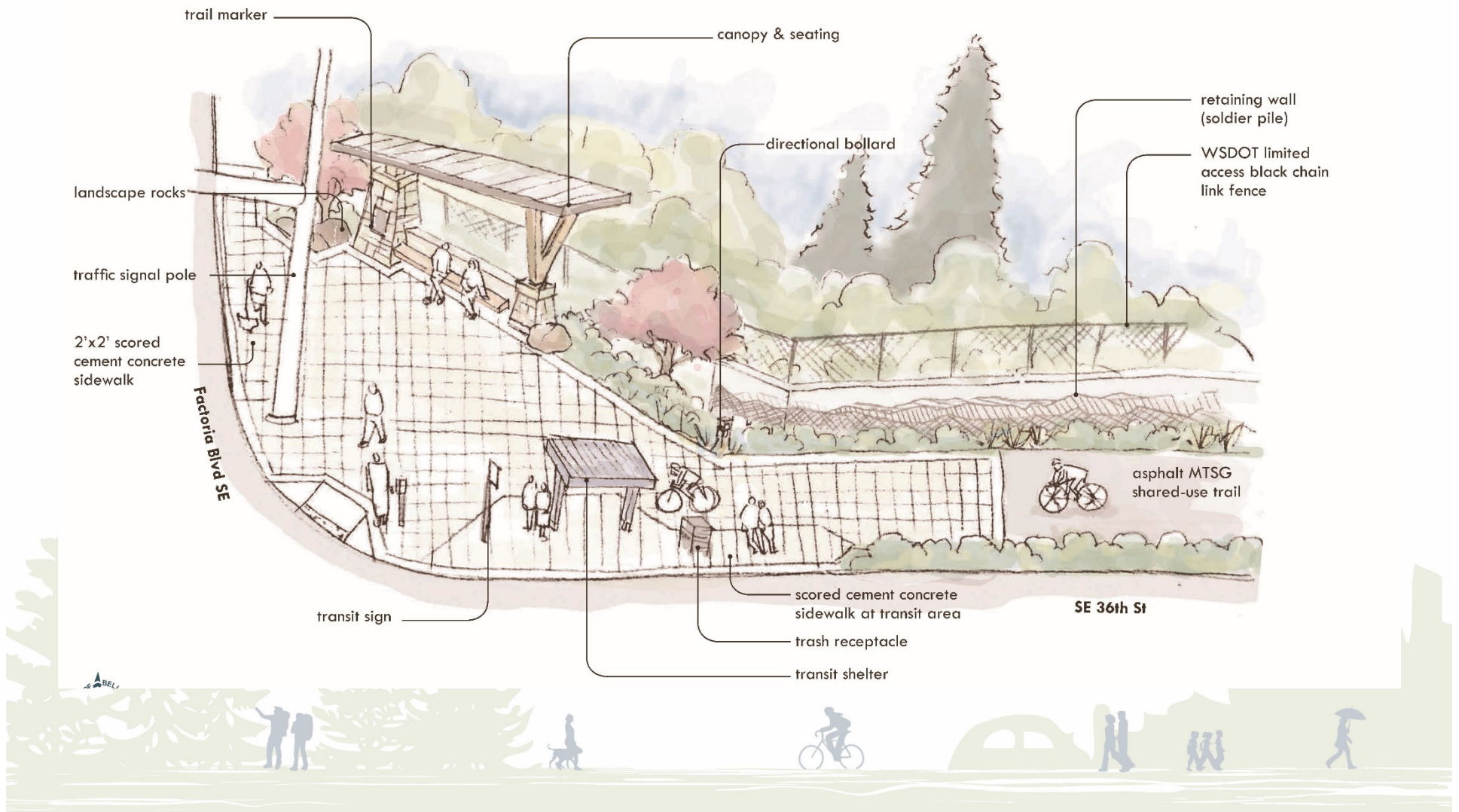
Greenway Trail: Factoria Blvd SE to 150th Ave SE



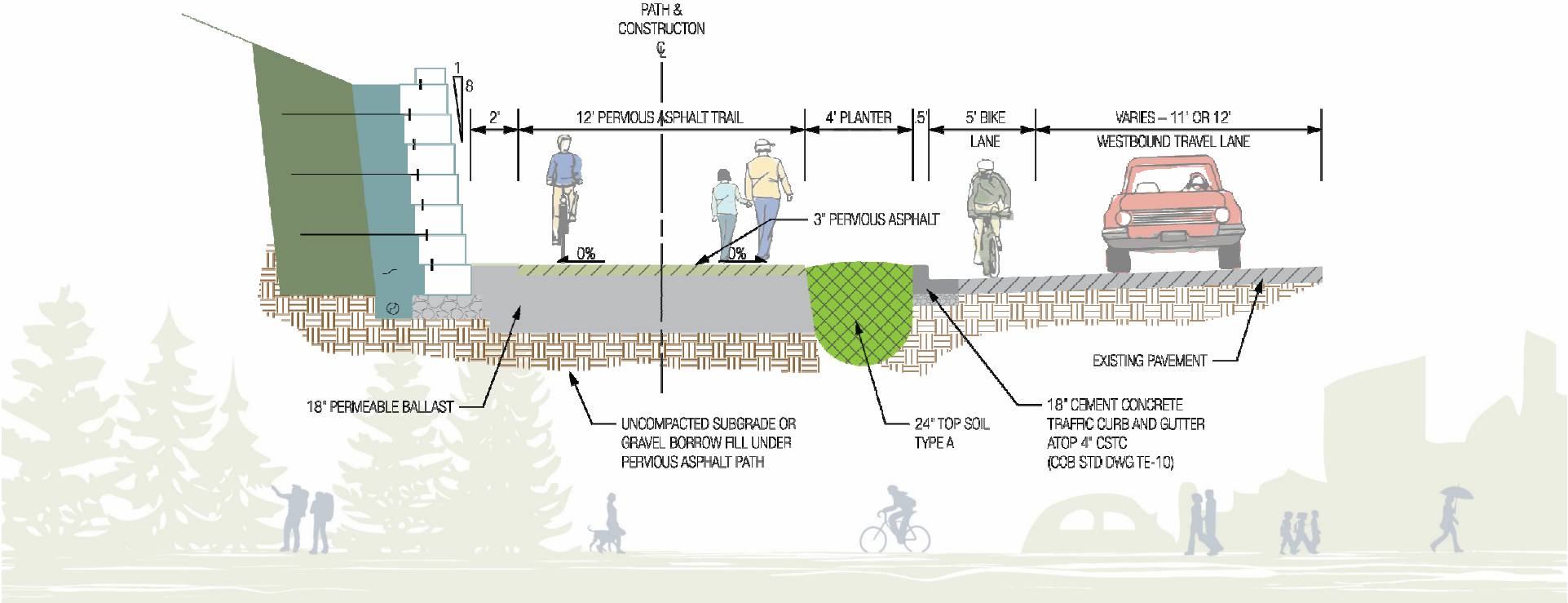
Greenway Trail: Changes at Factoria Blvd SE



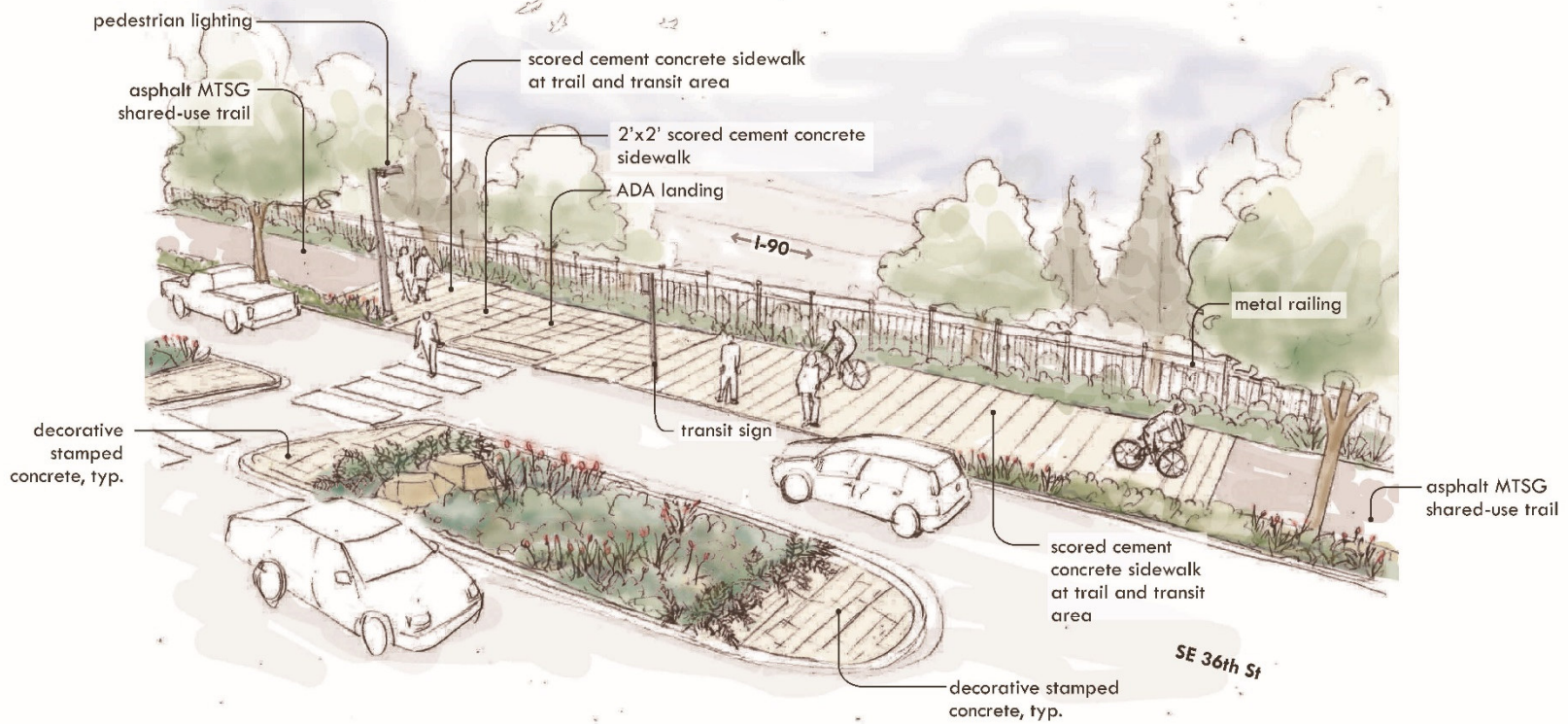
Greenway Trail: Changes at Factoria Blvd SE



Trail Section: Factoria Blvd SE to 150th Ave SE



Greenway Trail: Changes near Group Health



Trail Visualization at Group Health



Visualization Under 142nd Place SE

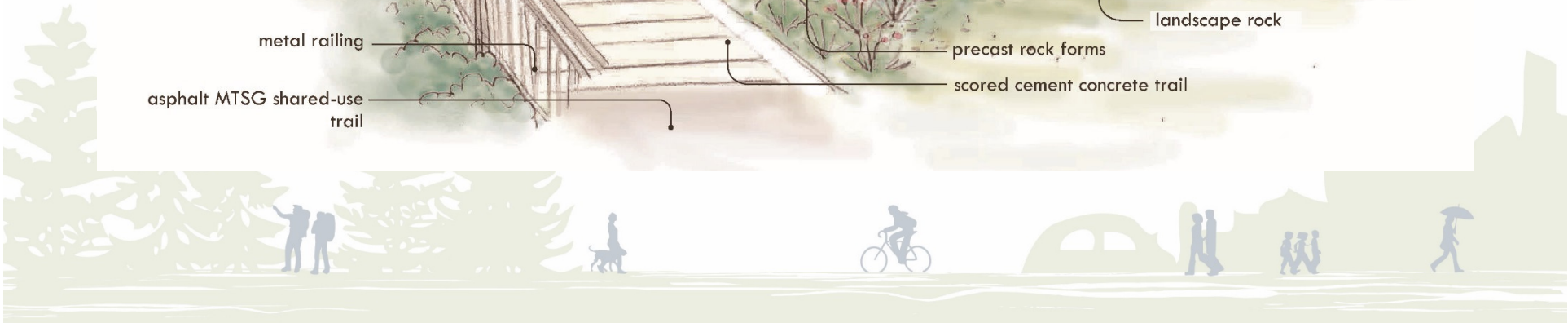
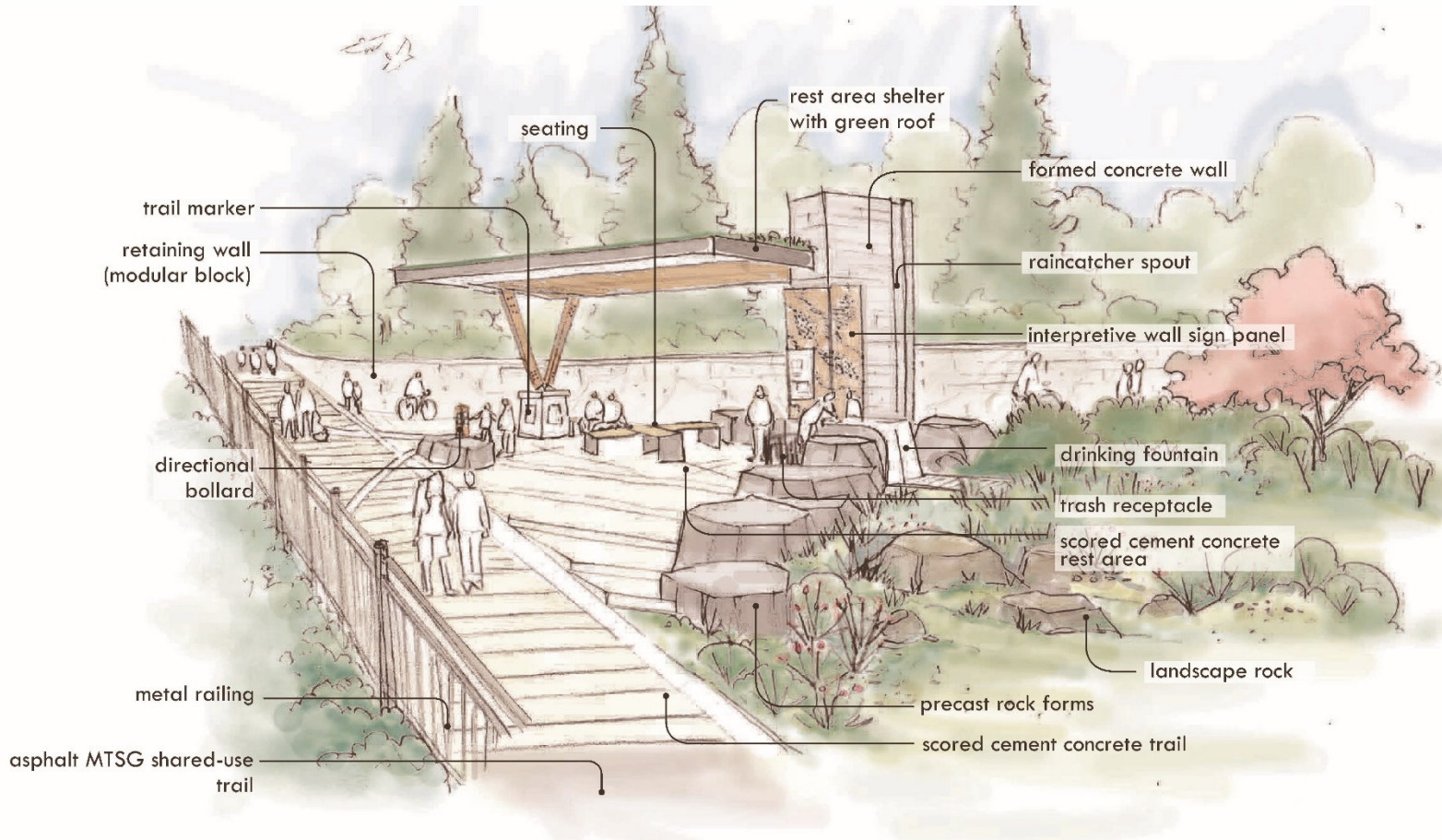


142nd Place SE Trail Rest Area Layout



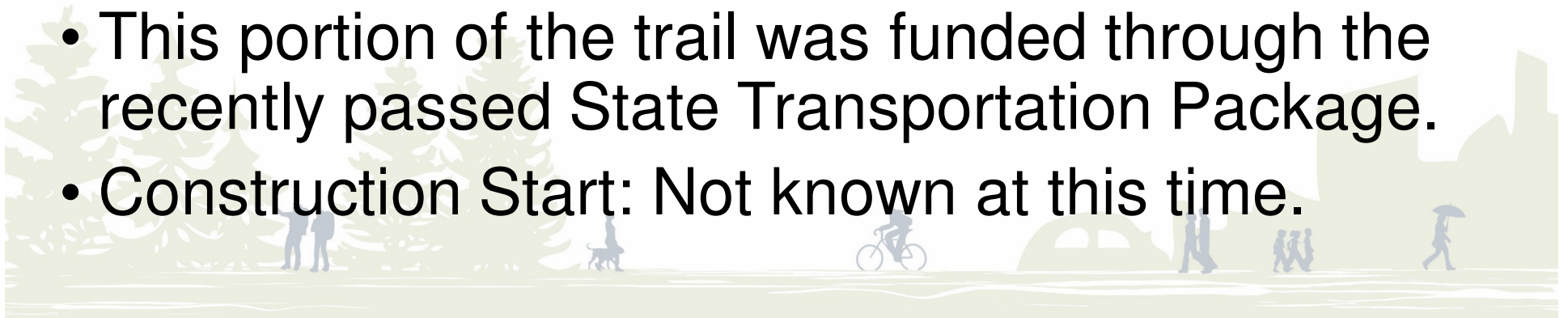
E 142ND PL SE - MAJOR REST AREA

142nd Place SE Trail Rest Area Rendering

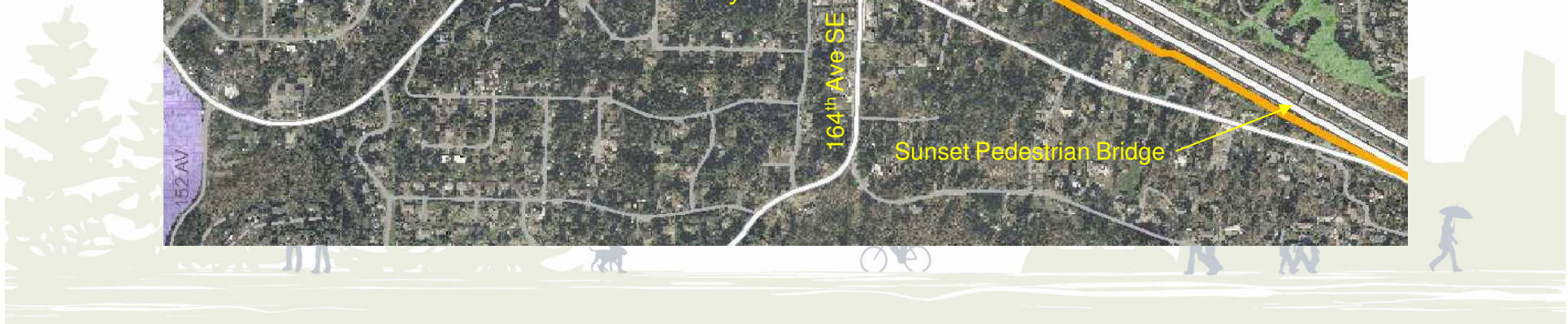
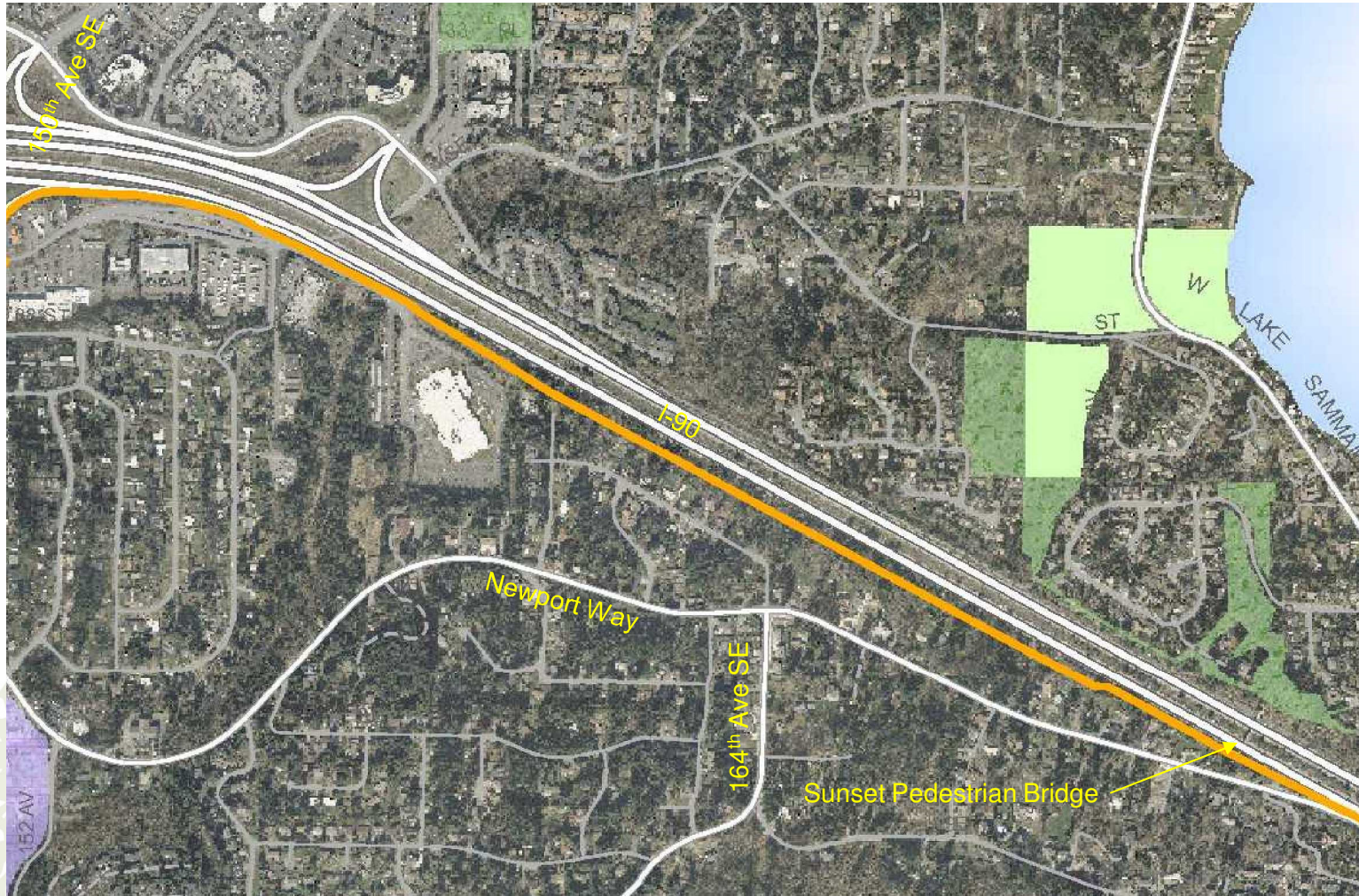


Greenway Trail: Factoria Blvd SE to 150th Ave SE

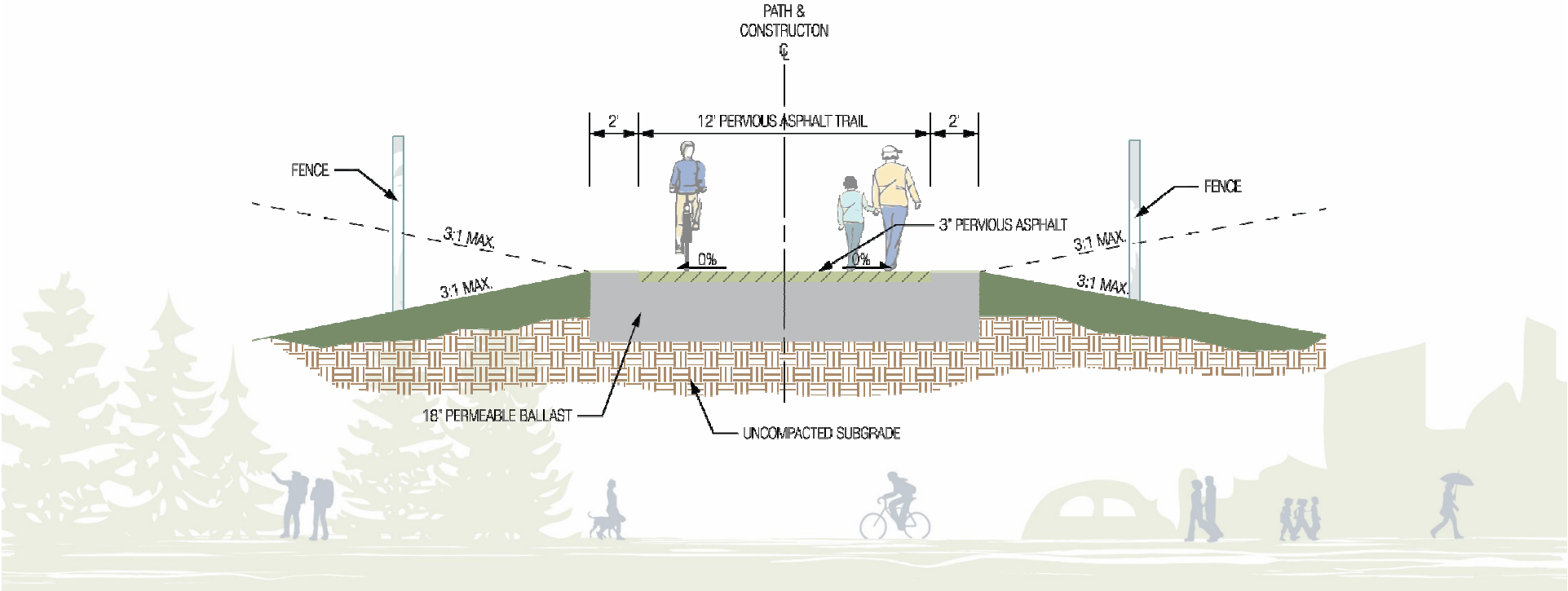
- Design to began in 2013 and will be completed by the spring of 2016. Design is currently 60% Complete.
- 7350 feet of new trail.
- New medians on SE 36 St
- Two new crosswalks on SE 36 St
- Cost Estimate: \$8,350,026
- This portion of the trail was funded through the recently passed State Transportation Package.
- Construction Start: Not known at this time.



Greenway Trail: 150th Ave SE to Sunset Pedestrian Bridge

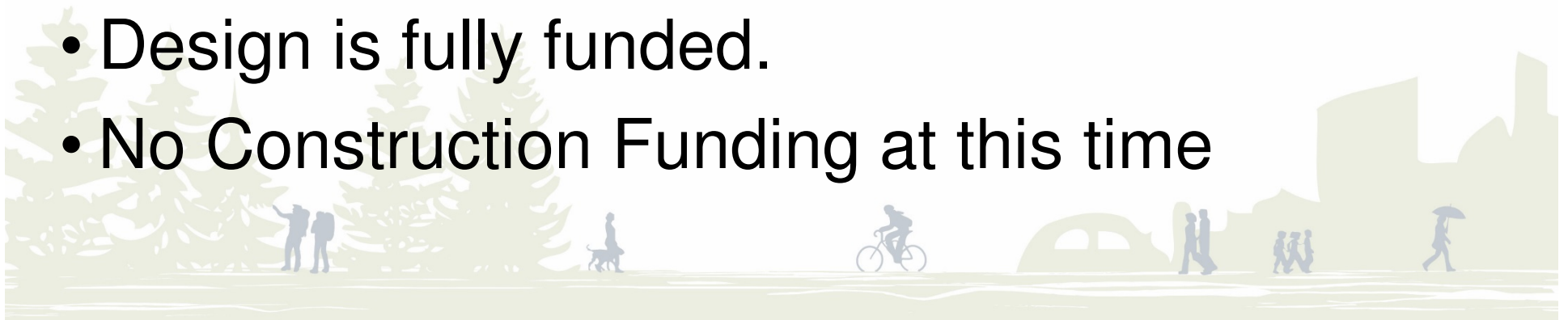


Trail Section: 150th Ave SE to Sunset Pedestrian Bridge

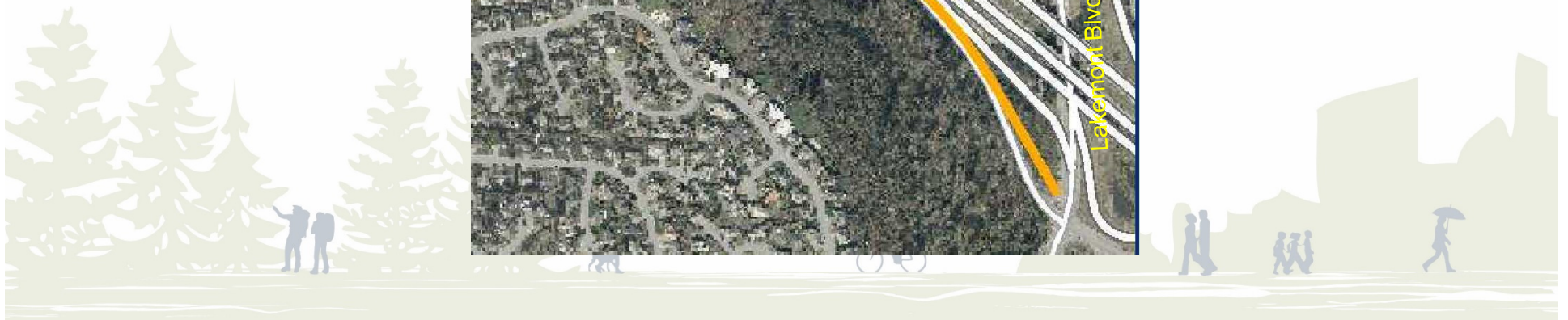
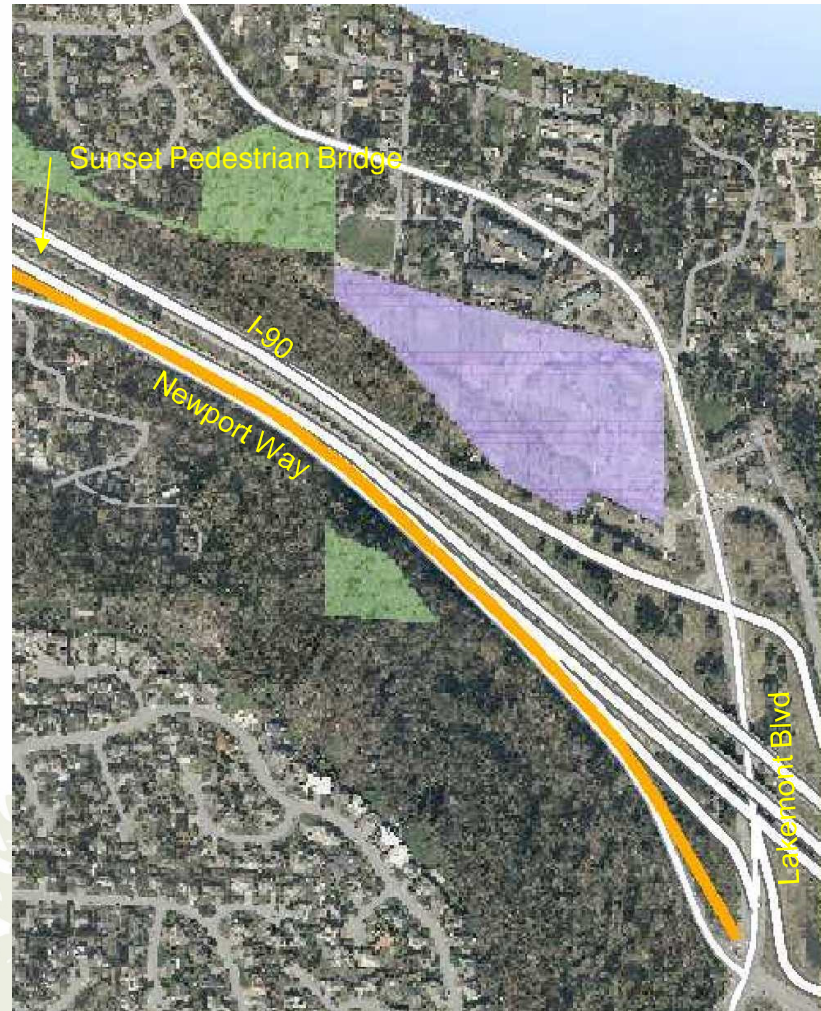


Greenway Trail: 150th Ave SE to Sunset Pedestrian Bridge

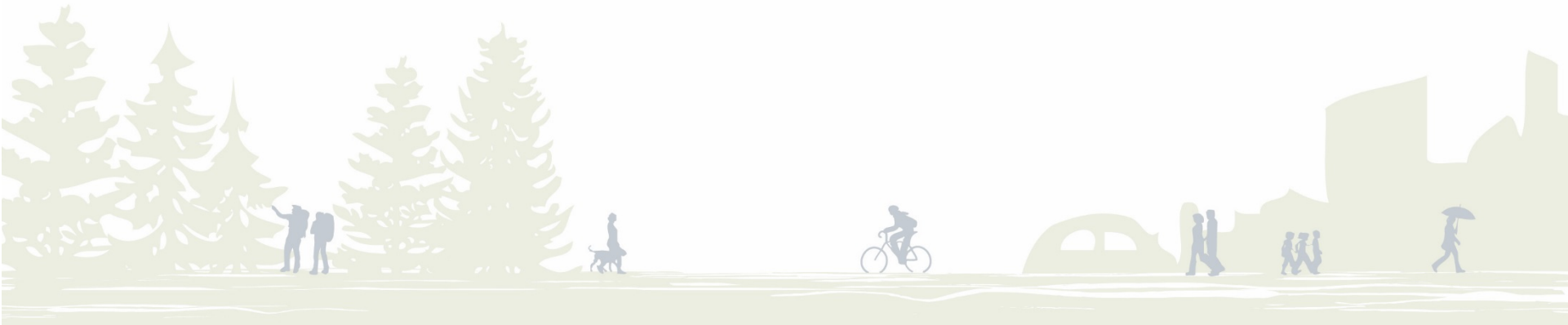
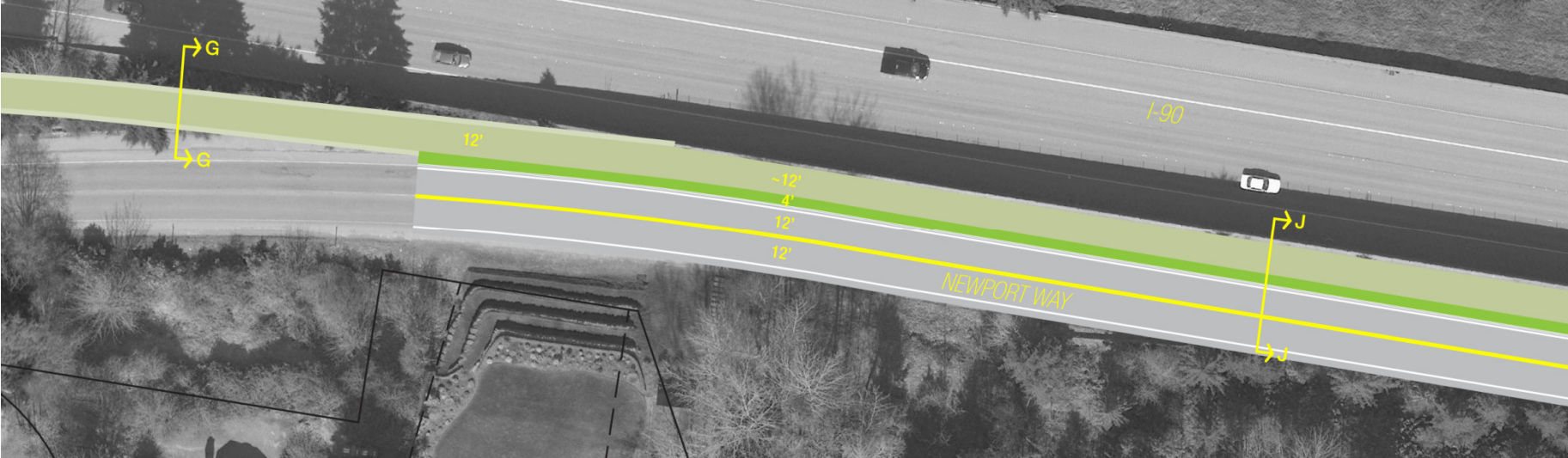
- Design to began in 2016 and will be completed in 2017.
- 8650 feet of new trail.
- Connections to the adjacent neighborhoods at 161st Ave SE and 164th Ave SE
- Cost Estimate: \$5,993,468
- Design is fully funded.
- No Construction Funding at this time



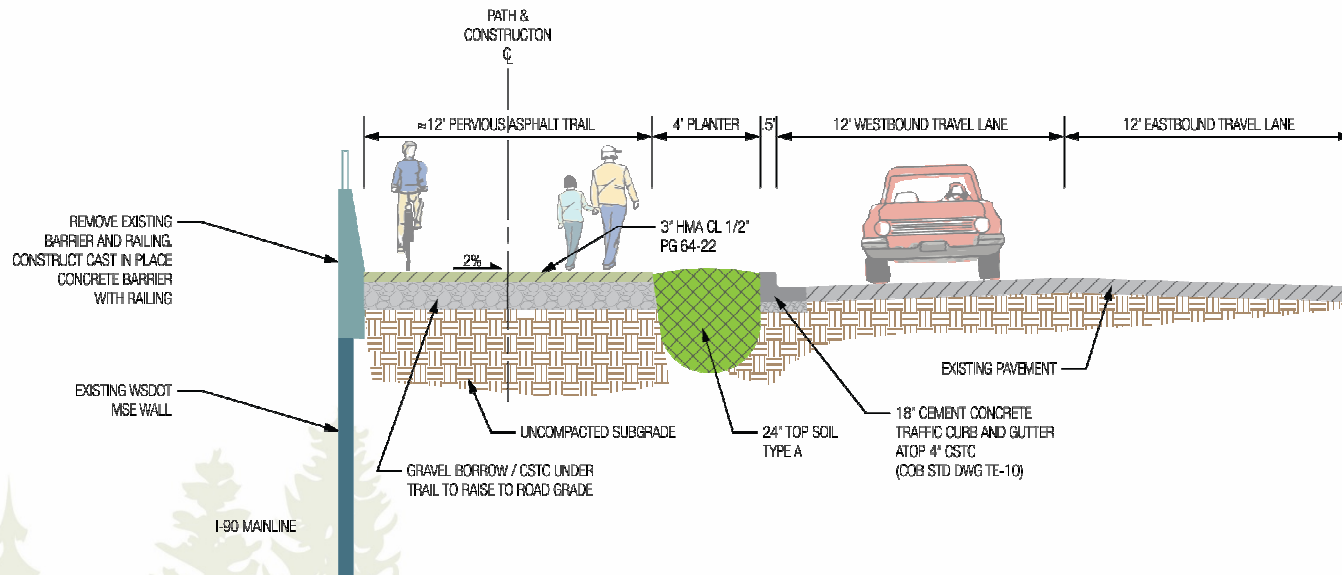
Greenway Trail: Sunset Pedestrian Bridge to Lakemont Blvd SE



Greenway Trail: Sunset Pedestrian Bridge to Lakemont Blvd SE

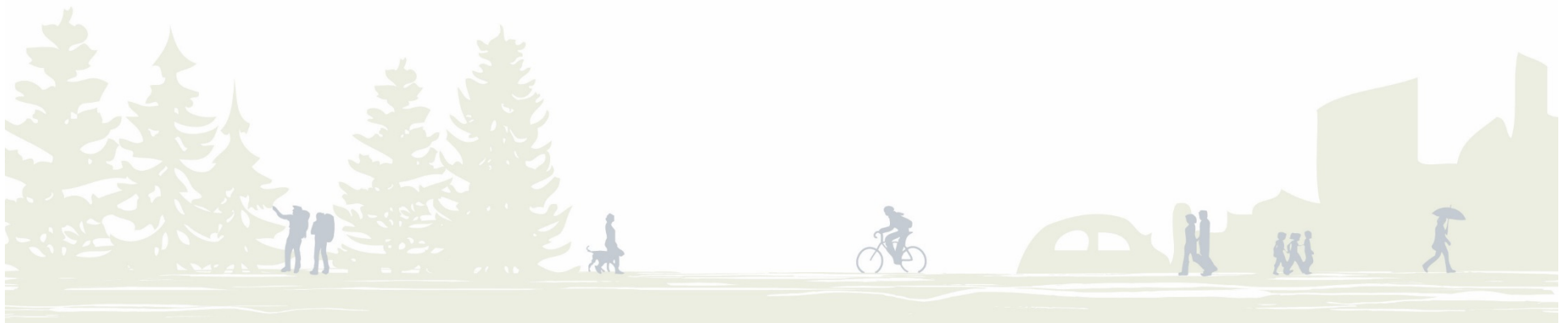


Trail Section: Sunset Pedestrian Bridge to Lakemont Blvd SE

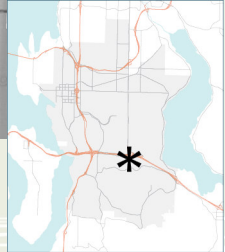
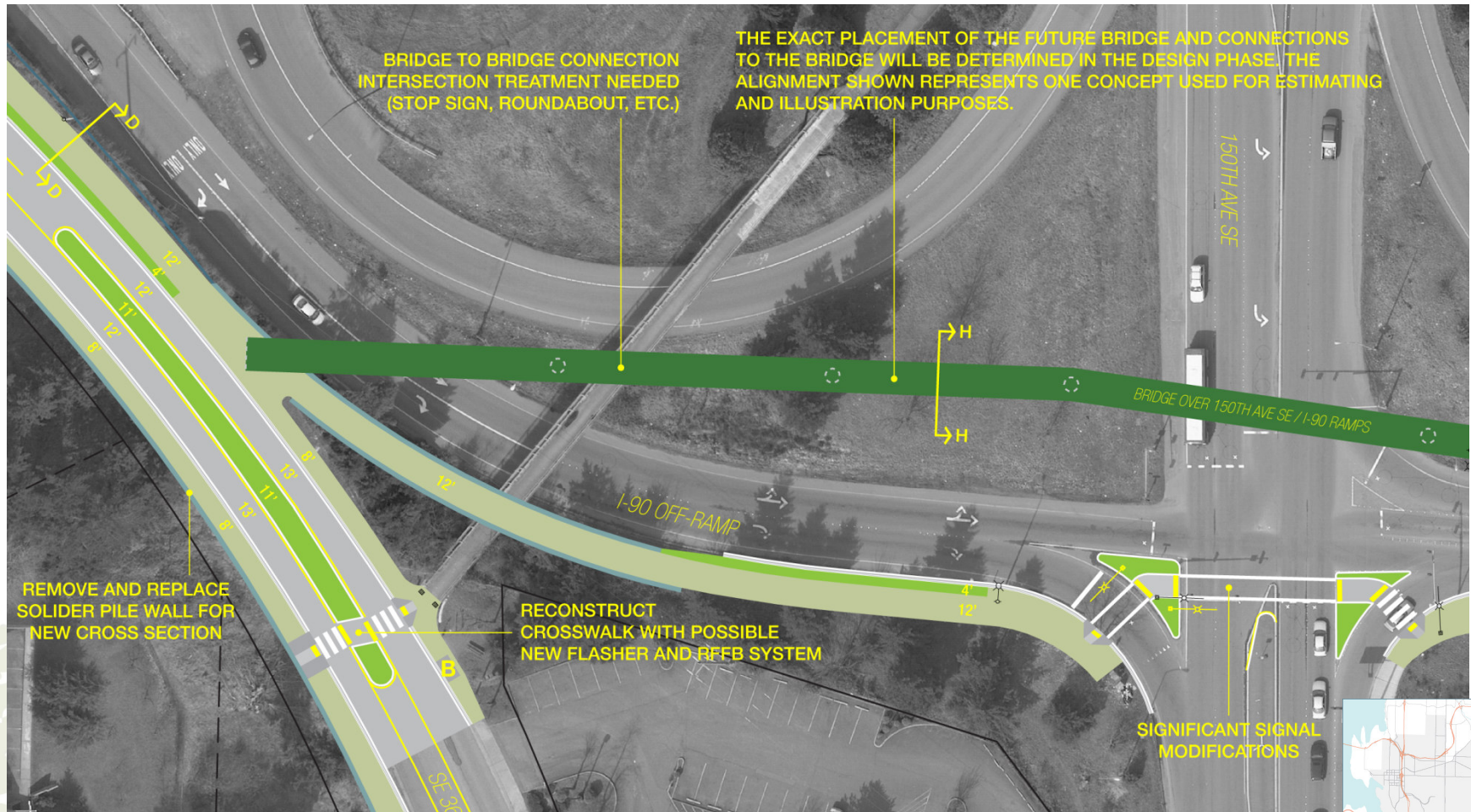


Greenway Trail: Sunset Pedestrian Bridge to Lakemont Blvd SE

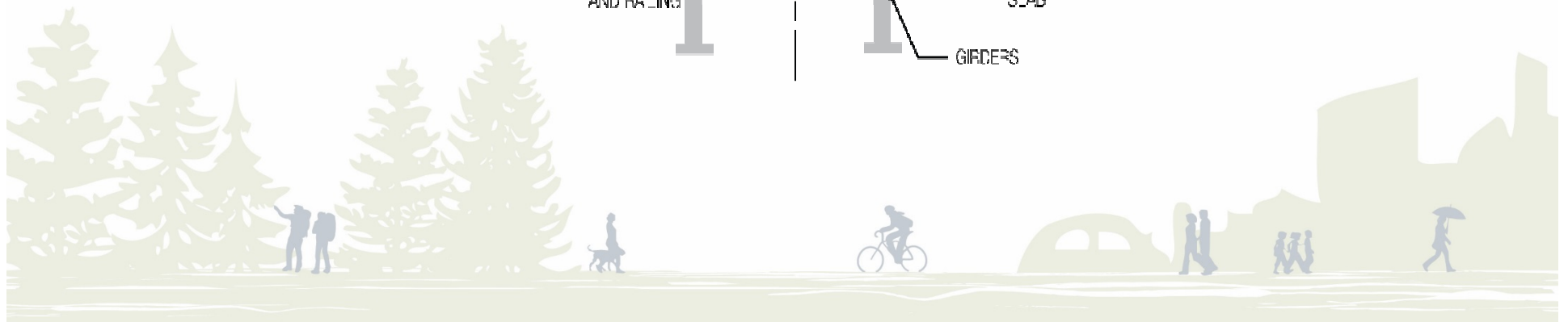
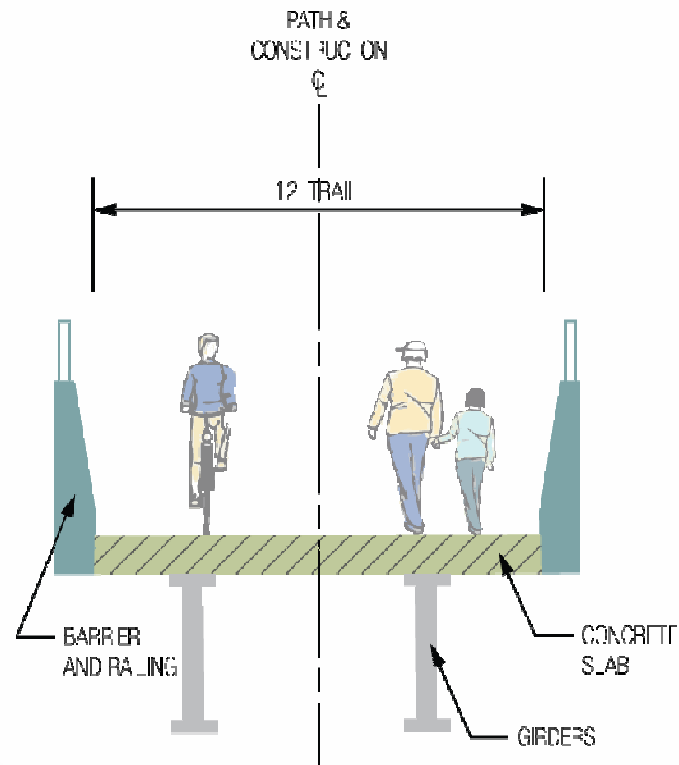
- No Design or Construction Funding
- Trail will parallel Newport Way to Lakemont Blvd SE
- 4020 feet of new trail.
- Cost Estimate: \$2,960,019



Greenway Trail: 150th Ave SE Flyover Bridge



Trail Section: 150th Ave SE Flyover Bridge



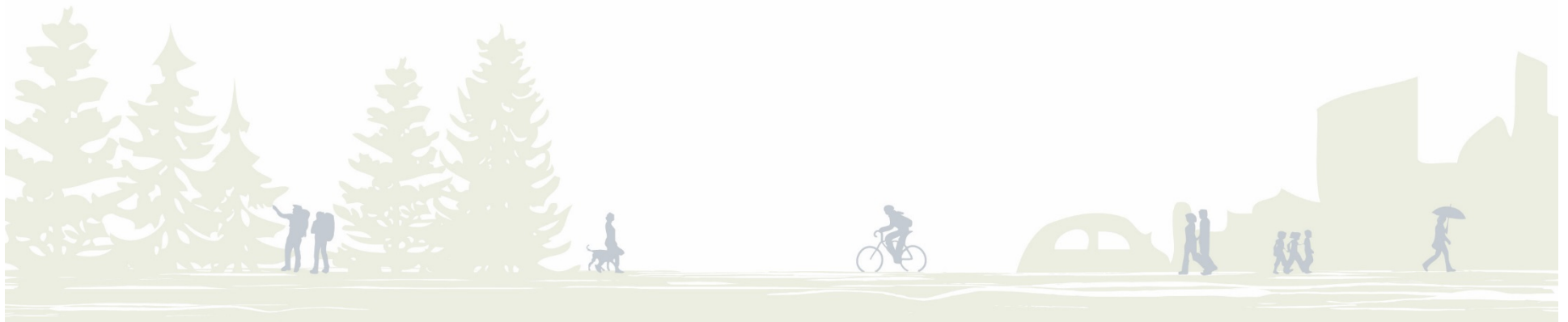
Visualization of 150th Ave SE Flyover Bridge



Greenway Trail: 150th Ave SE

Flyover Bridges

- No Design or Construction Funding
- Consists of one 1200 ft long bridge
- The bridge separates the trail users from busy intersections and offramps
- Cost Estimate: \$6,885,524



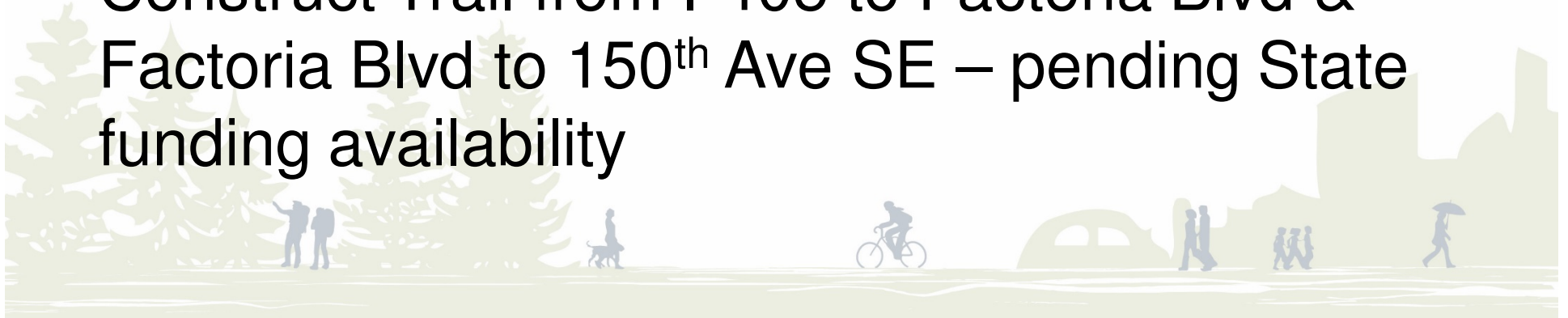
Total Project Cost Estimate Summary

Segment	Construction Planning Level Cost Estimate	Footage of Trail in Segment	Cost per ft
Greenway Trail - Factoria Blvd to 150 Ave SE	\$8,350,026	7350	\$1,136
Greenway Trail - 150 Ave SE to Sunset Bridge	\$5,993,468	8650	\$693
Greenway Trail - Newport Way to Lakemont Blvd	\$2,960,019	4020	\$736
150 Ave SE Vicinity Flyover Bridge	\$6,885,524	1200	\$5,738
Factoria Blvd & West Extension Flyover Bridges, Offramp Widening	\$6,487,708	2325	\$2,790
Grand Total	\$30,676,746	23,545	\$1,303



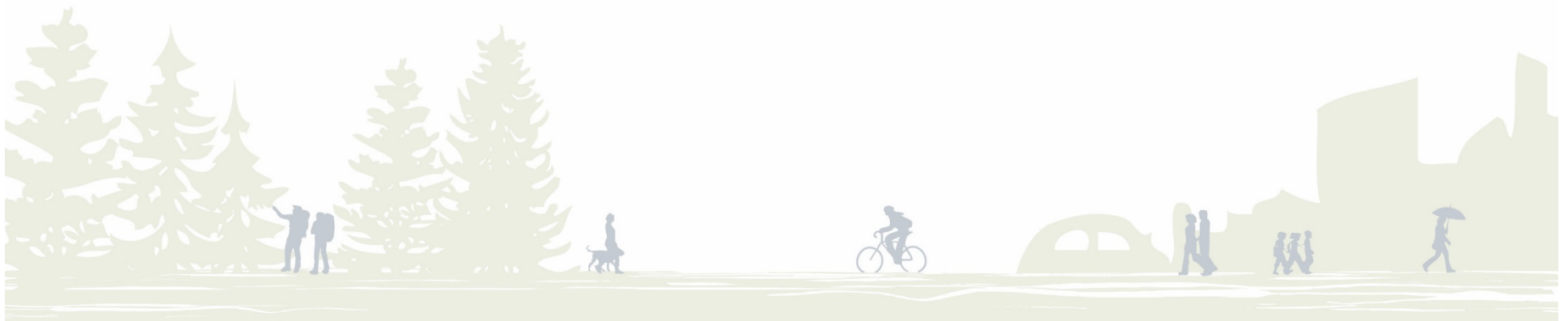
NEXT STEPS:

- Complete design of Trail from I-405 to Factoria Blvd SE by the end of 2016.
- Complete Design of the Trail from Factoria Blvd to 150th Ave SE in Spring 2016.
- Complete Design of the trail from 150th Ave SE to the Sunset Pedestrian Bridge in mid-2017
- Construct Trail from I-405 to Factoria Blvd & Factoria Blvd to 150th Ave SE – pending State funding availability



NEXT STEPS:

- Complete the trail design from Sunset Pedestrian Bridge to Lakemont Blvd & 150th Ave Flyover Bridges when funding becomes available.
- Construct trail segments east of 150th Ave SE when funding becomes available.





CITY OF BELLEVUE
TRANSPORTATION DEPARTMENT

MOUNTAINS TO SOUND GREENWAY TRAIL **UPDATE**

THANK YOU!
QUESTIONS?

