



# Bellevue Transit Master Plan



***OLS at Bellevue College  
March 13, 2013***



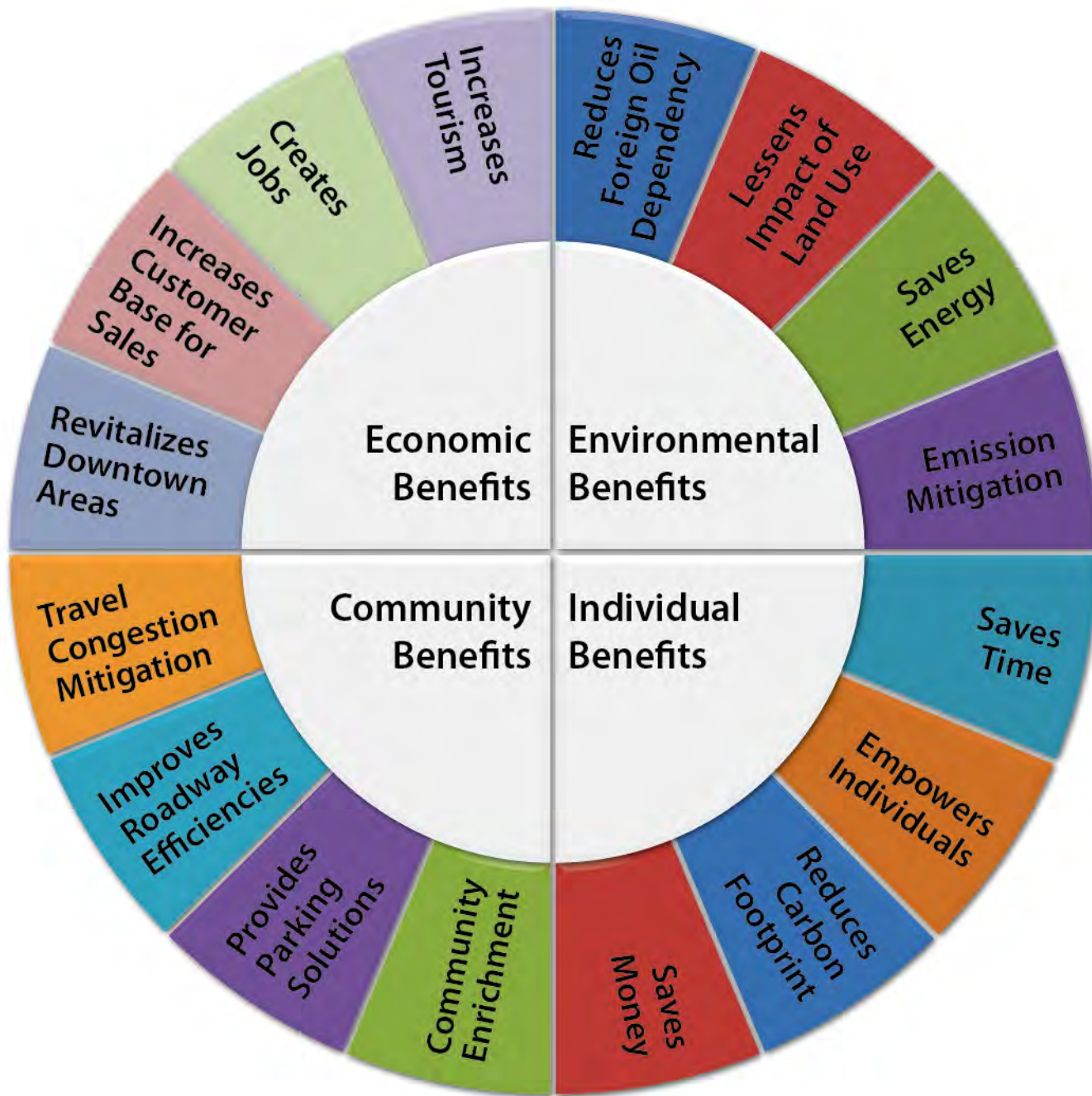
**“Livability means being able to take your kids to school, go to work, see a doctor, drop by the grocery or Post Office, go out to dinner and a movie, and play with your kids at the park – all without having to get in your car.”**

***- Ray LaHood, United States Secretary of Transportation***



**“There’s extreme competition for talent, so it’s recruitment, retention. What you’ve got in downtown Bellevue is a critical mass. You’ve got housing, you’ve got restaurants, you’ve got retail, and **you’ve got transit.**”**

***- Steve Schwartz, Director, Jones Lang LaSalle (The Seattle Times, 1/14/13)***





“Support planned growth and development in Bellevue with a **bold transit vision** that encourages long-term ridership growth.”

*- Bellevue City Council, Project Principles (Approved July 9, 2012)*

## CURRENT TRANSIT NETWORK



What service types are in place today and how well do they perform?

## MARKET SEGMENTATION



What are the attitudes and preferences that drive traveler choices?

## FUTURE TRAVEL MARKETS



Which segments in which travel markets should transit services compete for?

## MARKET DRIVEN STRATEGIES

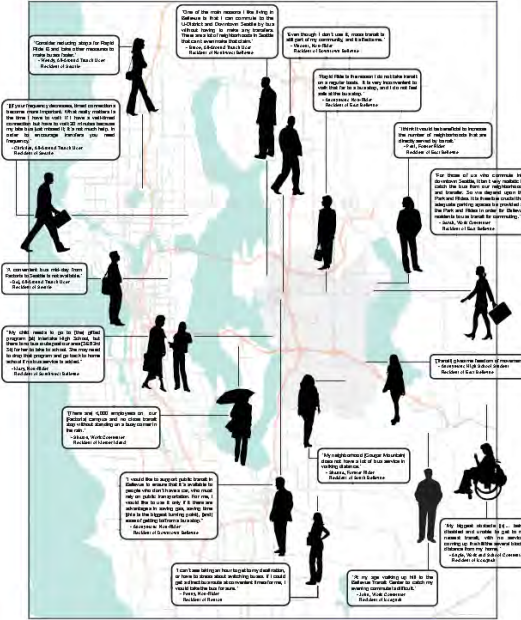


What kinds of strategies can best seize these opportunities?

# Corporations, Agencies, and Institutions



# Riders, Former Riders, and Non-Riders



- 您認為貝爾優的交通設施有甚麼好的地方?  
 非常喜歡這裏的公車，十分方便！  
 如票單，去城區，看病等之。
- 您認為貝爾優的交通設施有甚麼不好的地方？  
 其中 Rapid Ride 公車的在  
 此若中心增加一個行車站（向  
 从 Redmond 到 Bellevue 的）

# City of Bellevue Boards and Commissions





**TurningPoint®**

[www.turningtechnologies.com](http://www.turningtechnologies.com)

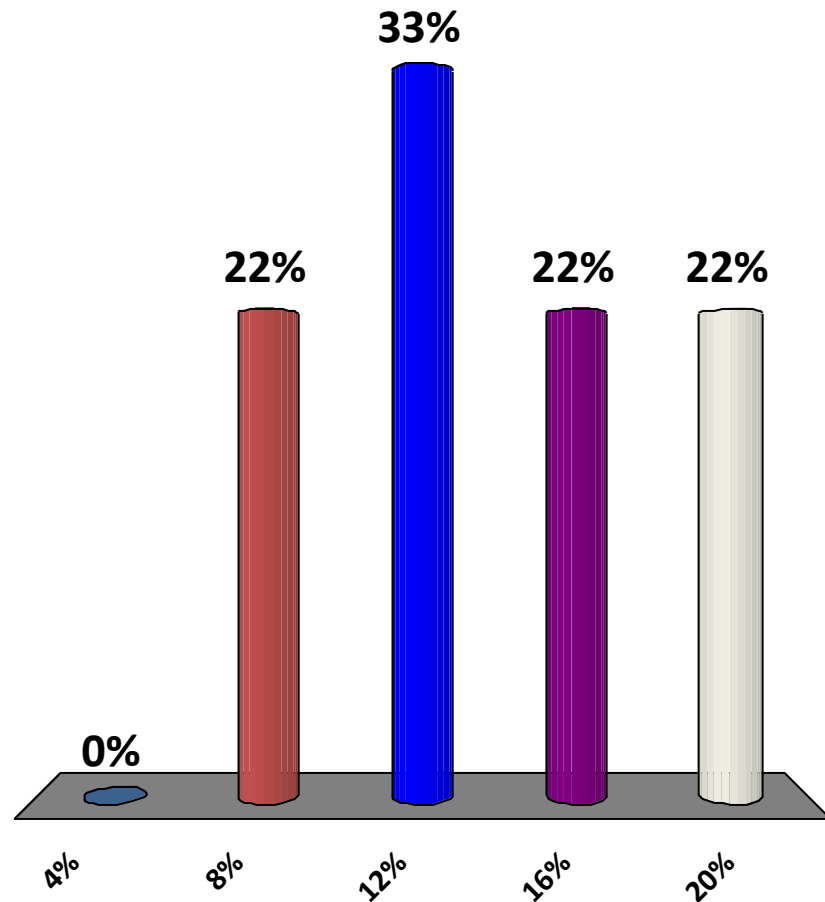


**ResponseCard® RF**

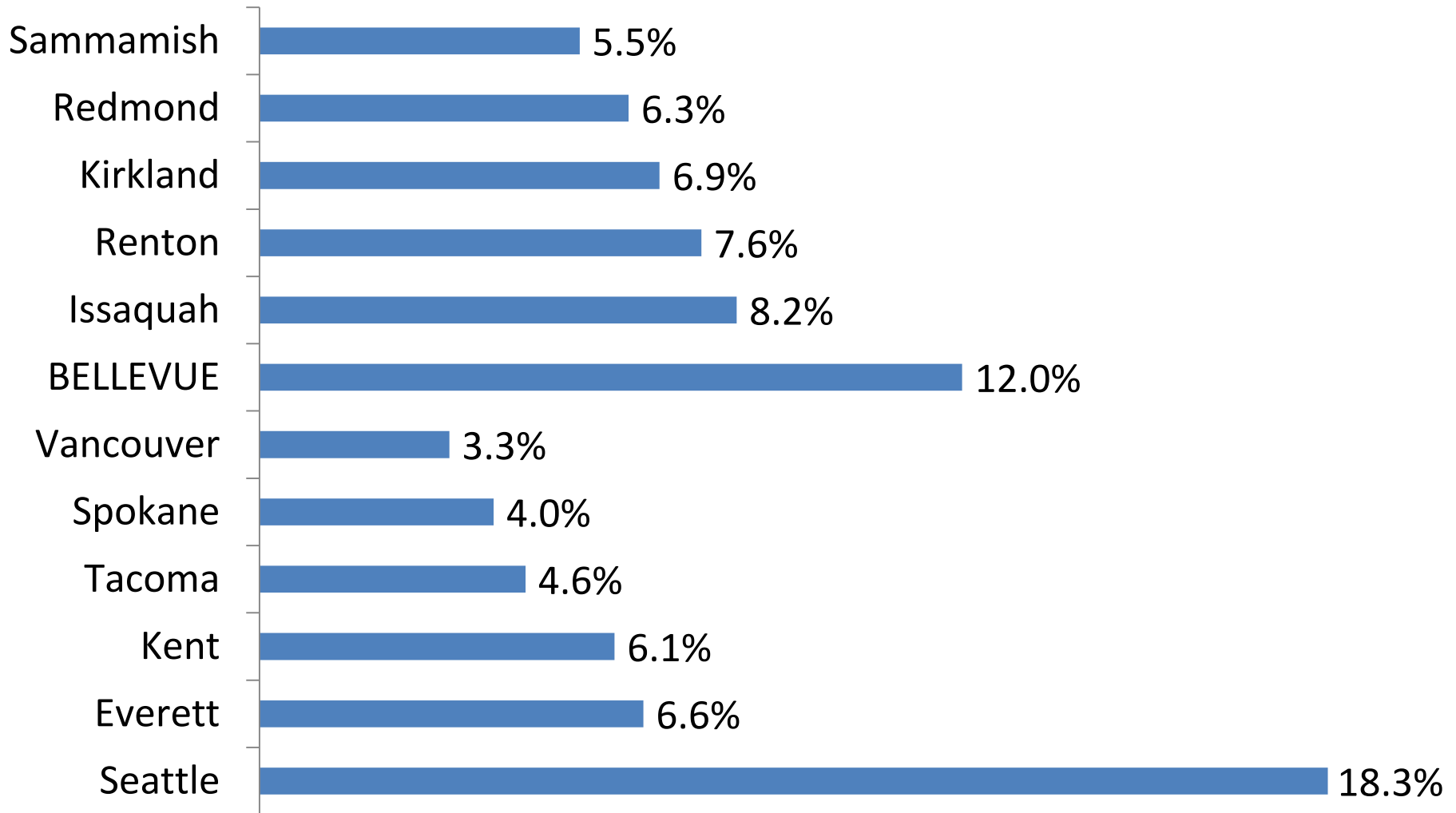


# What percentage of commute trips in Bellevue are by transit?

1. 4%
2. 8%
3. 12%
4. 16%
5. 20%

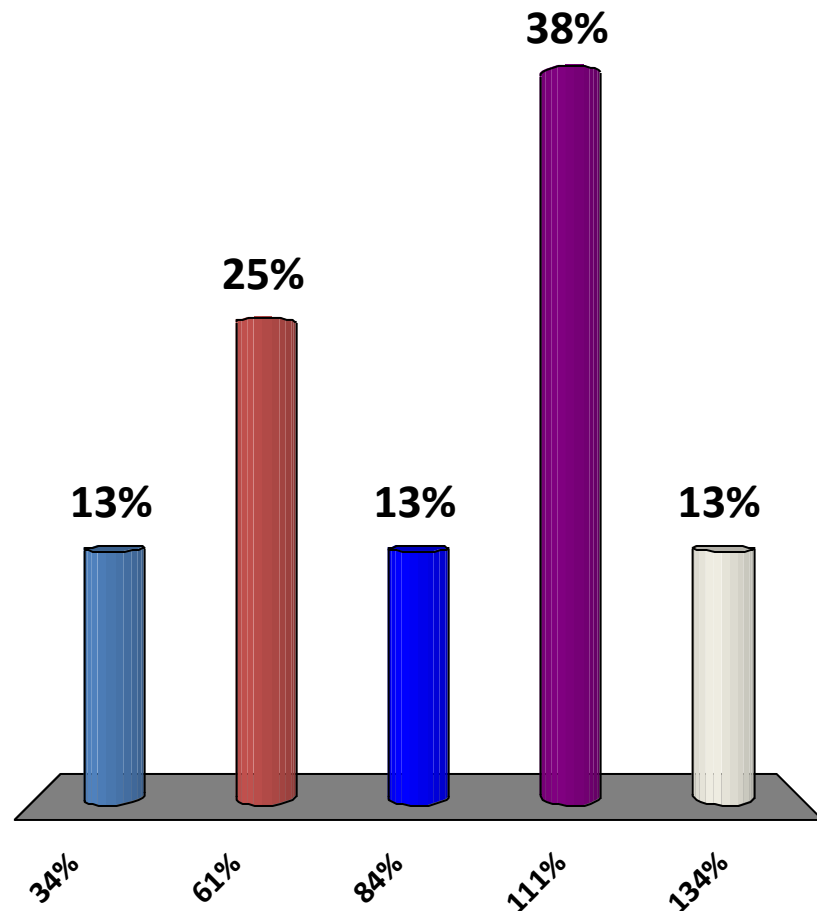


# Percentage of Commute Trips by Bus in Eastside and Large Cities



# What was the percent increase in daily bus usage in Bellevue from Fall 2003 to Spring 2012?

1. 34%
2. 61%
3. 84%
4. 111%
5. 134%



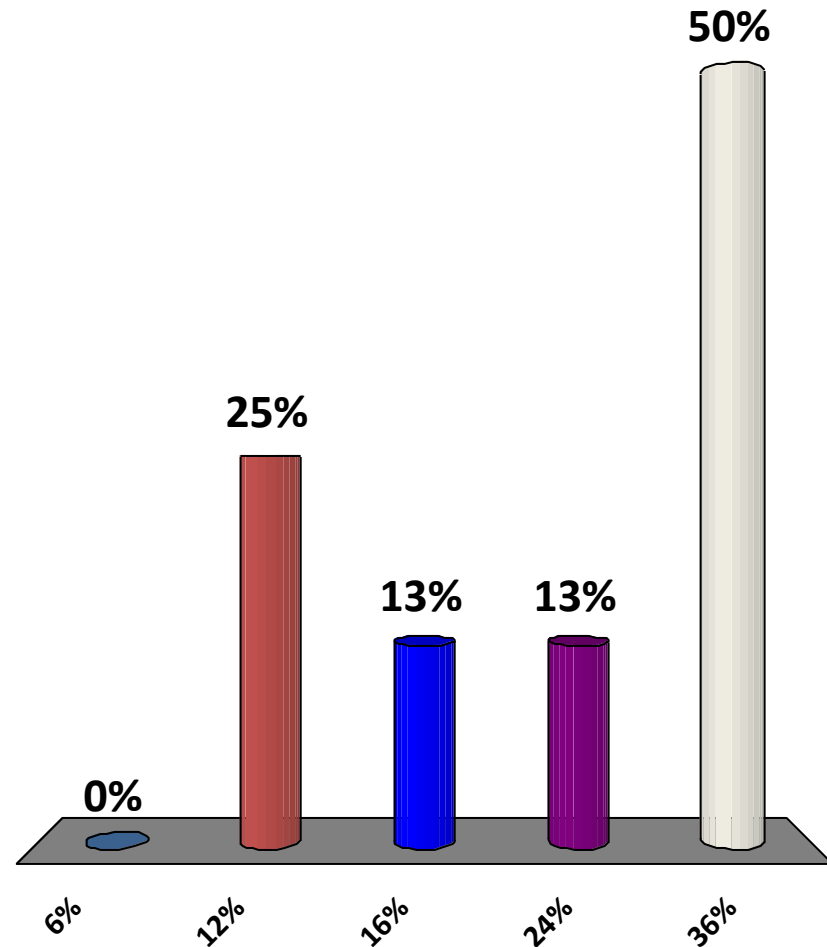
# Transit Usage in Bellevue's Mobility Management Areas (MMA)

MMA	Fall 2003	Spring 2012	% Change
Downtown	7,346	17,700	141%
Eastgate	2,197	8,689	296%
Crossroads	1,706	3,501	105%
South Bellevue	2,908	3,275	13%
East Bellevue	1,695	2,688	59%
Factoria	1,724	2,331	35%
Richards Valley	1,301	1,969	51%
Bel-Red Northup	883	1,586	80%
Newport Hills	670	838	25%
Newcastle	384	831	116%
Bridle Trails	62	829	1,237%
Northeast Bellevue	532	786	48%
North Bellevue	512	685	34%
Wilburton	-	565	N/A
<b>Total</b>	<b>21,920</b>	<b>46,274</b>	<b>111%</b>

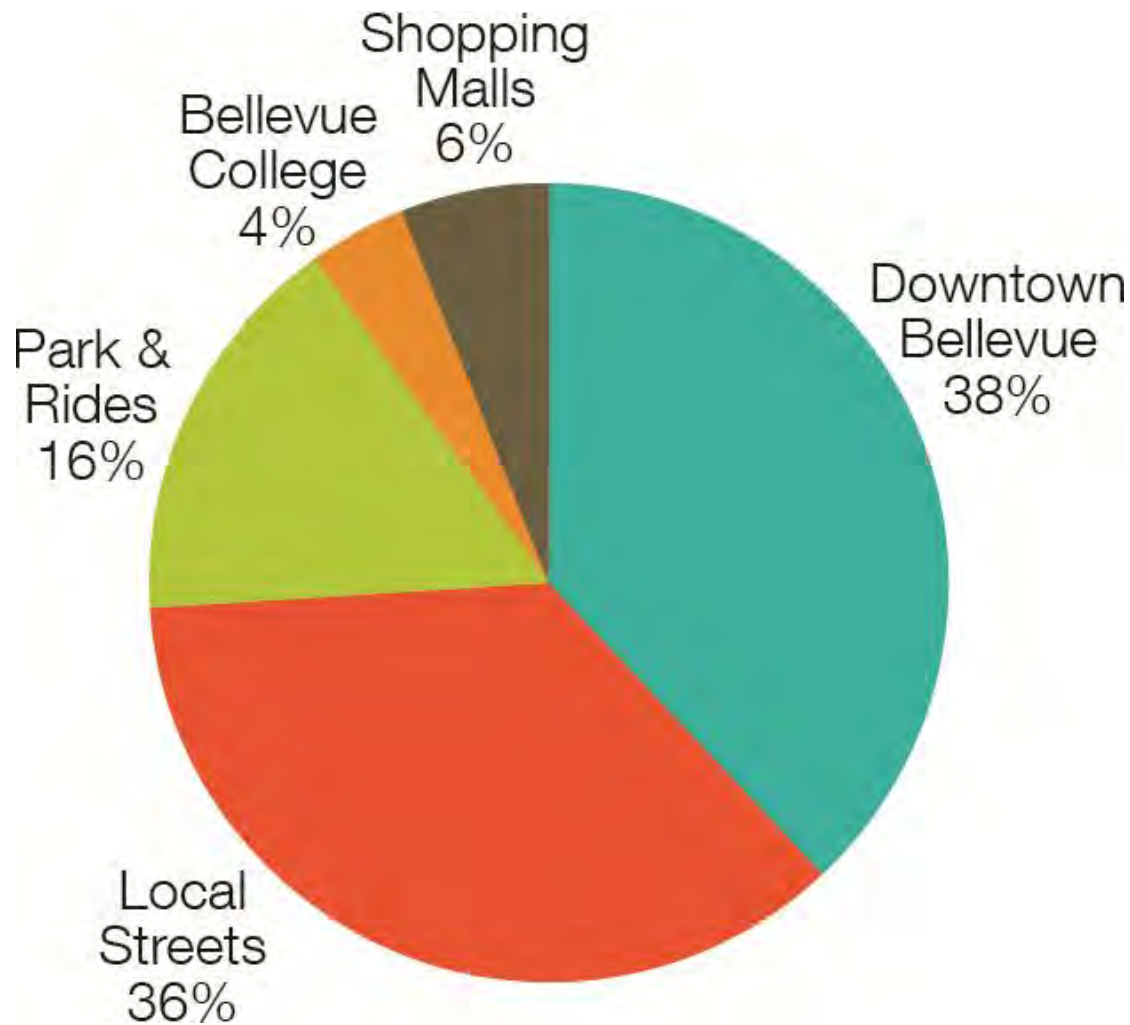
# What percent of transit usage in Bellevue takes place at Park-and-Ride facilities?

[Eastgate P&R; South Bellevue P&R; Newport Hills; Wilburton; Eastgate Direct Access Ramp]

1. 6%
2. 12%
3. 16%
4. 24%
5. 36%



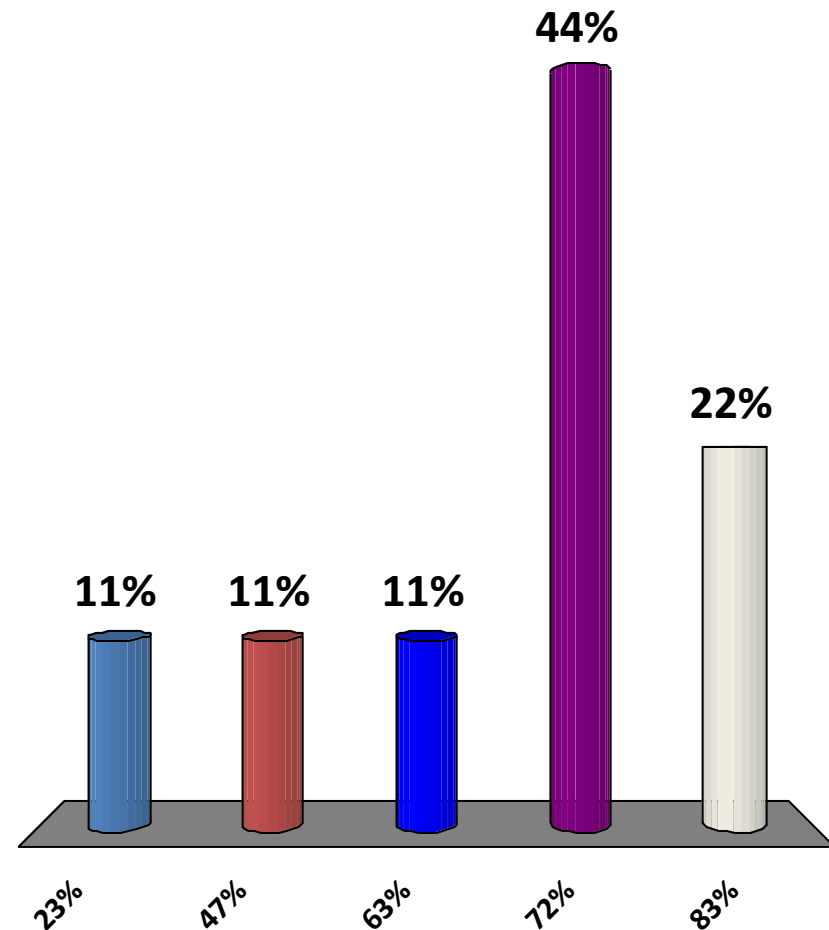
# Daily Transit Usage Patterns in Bellevue



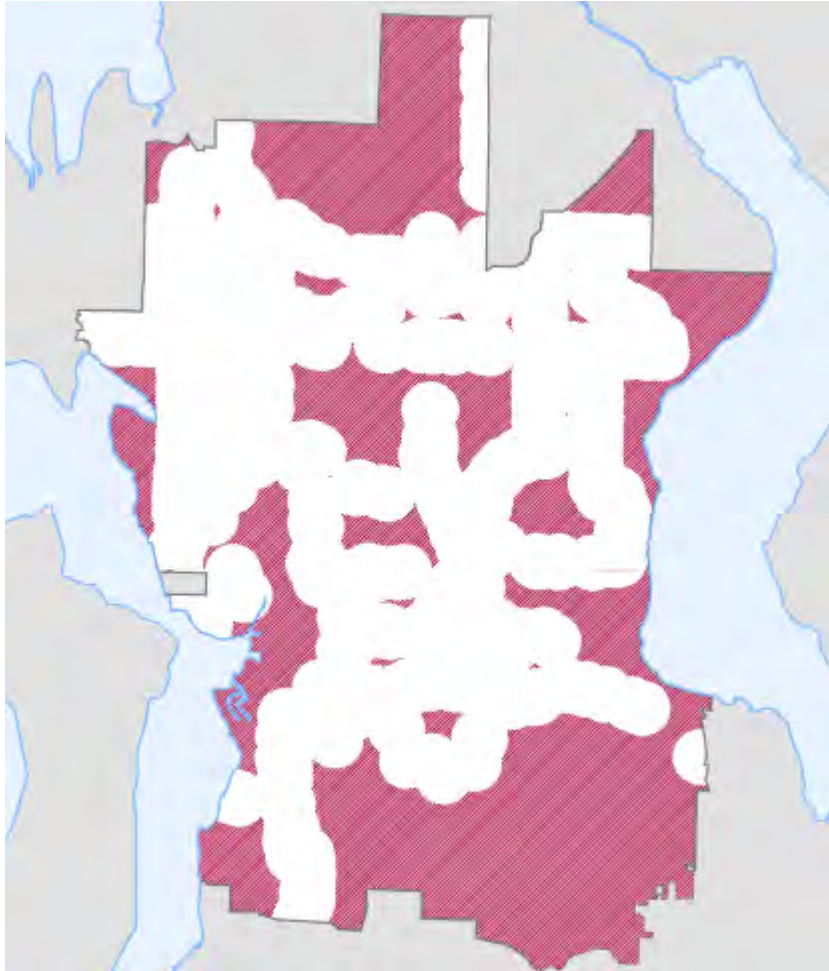
# What percent of Bellevue's population (with ¼ mile of a stop) enjoys 30 min headways in the peak?

[Headway: The amount of time between consecutive trips in the same direction of travel.]

1. 23%
2. 47%
3. 63%
4. 72%
5. 83%



# Areas in Bellevue Served by 30 Minute Headways in the Peak Period



## Percent of population served:

**Residents - 72%**

**Older adults - 72%**

**Minorities - 75%**

**Speak language other than English - 87%**

**People in poverty - 83%**

**Affordable housing complexes - 88%**

**Major employers - 98%**

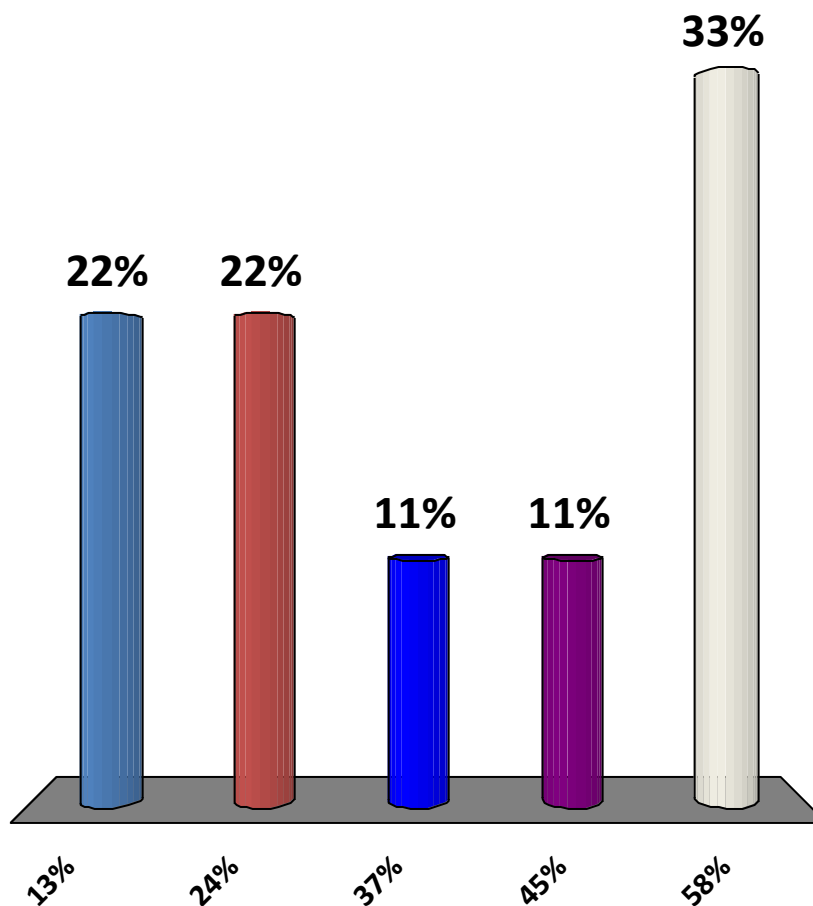
**Jobs - 92%**



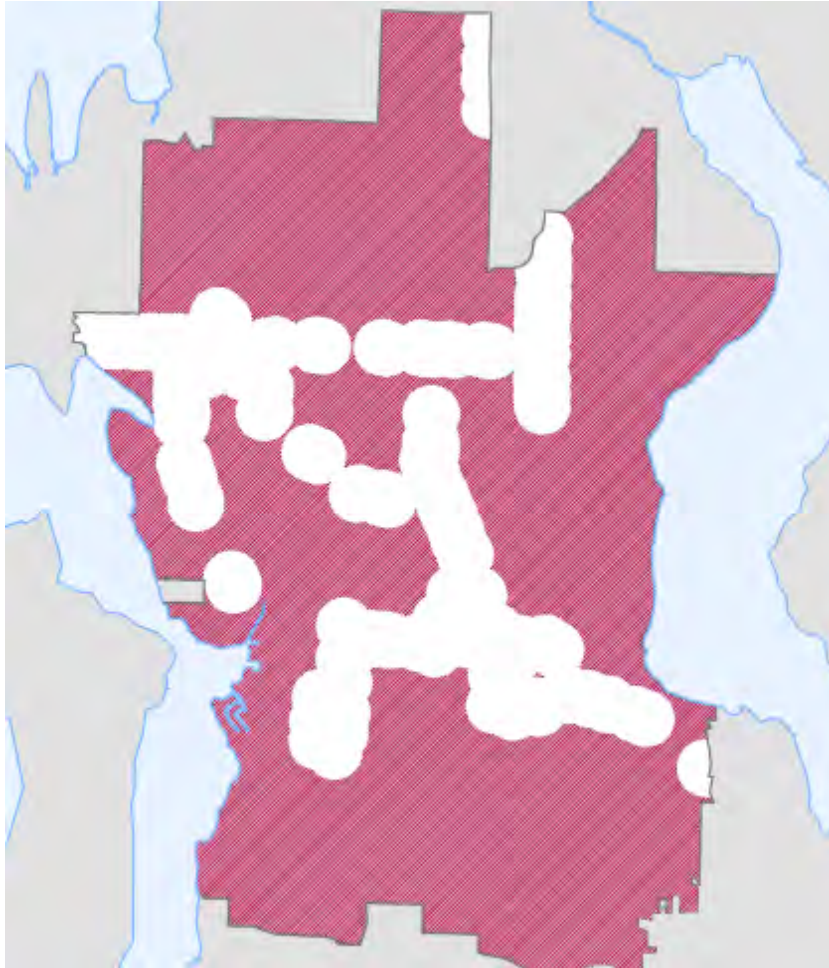
# What percent of Bellevue's population (with ¼ mile of a stop) enjoys 15 min headways in the peak?

[Headway: The amount of time between consecutive trips in the same direction of travel.]

1. 13%
2. 24%
3. 37%
4. 45%
5. 58%



# Areas in Bellevue Served by 15 Minute Headways in the Peak Period



## Percent of population served:

**Residents - 37%**

**Older adults - 36%**

**Minorities - 42%**

**Speak language other than English - 56%**

**People in poverty - 51%**

**Affordable housing complexes - 56%**

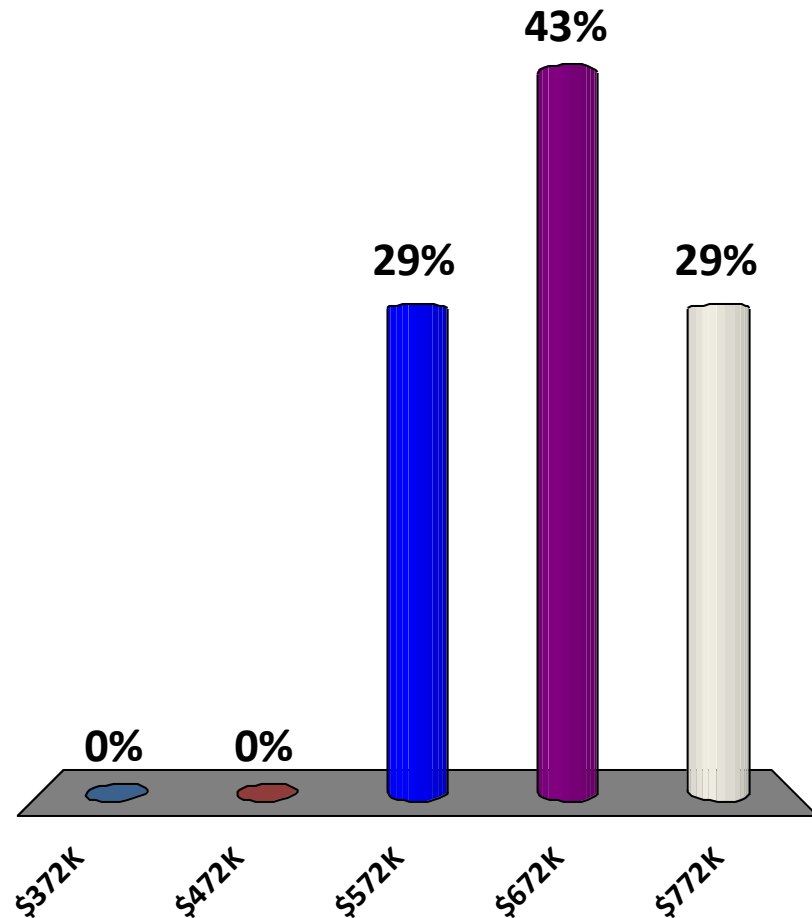
**Major employers - 79%**

**Jobs - 63%**

# What is the cost to operate a conventional bus for one year?

[15 hours per day; 365 days per year]

1. \$372K
2. \$472K
3. \$572K
4. \$672K
5. \$772K



# Bus Operating Costs

[15 hours per day; 365 days per year]



**In Service: 6 AM**



**Out of Service: 9 PM**

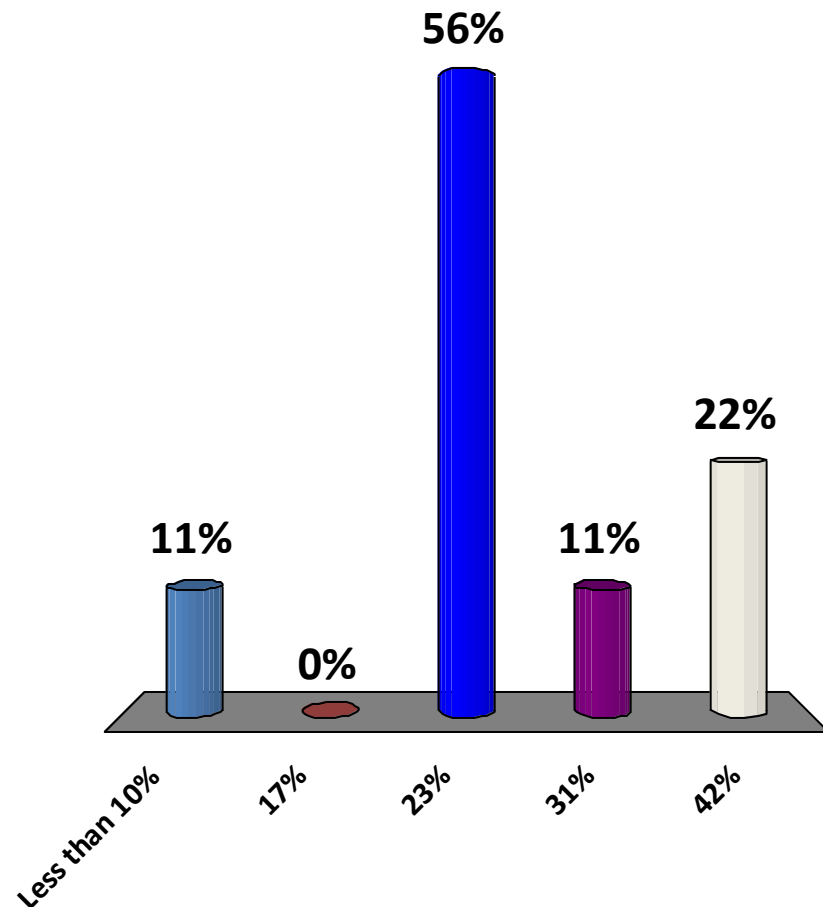
<b>15 Hours per day</b>	<b>15</b>	<b>15 Daily Hours</b>
<b>365 Days per year</b>	<b>5,475</b>	<b>Annual Service Hours</b>
<b>\$141/Service hour</b>	<b>\$772,000</b>	<b>Annual Operating Cost</b>

The cost to operate a conventional bus for one year is more than the cost of the bus itself.

# How much cheaper is it to operate a van versus a 40' bus in a defined service area?



1. Less than 10%
2. 17%
3. 23%
4. 31%
5. 42%



# Case Study

## Route 240 : Downtown Bellevue to Renton via Newcastle, Factoria

- Boarding per Platform Hour = 22
- Cost per Boarding = \$5.50



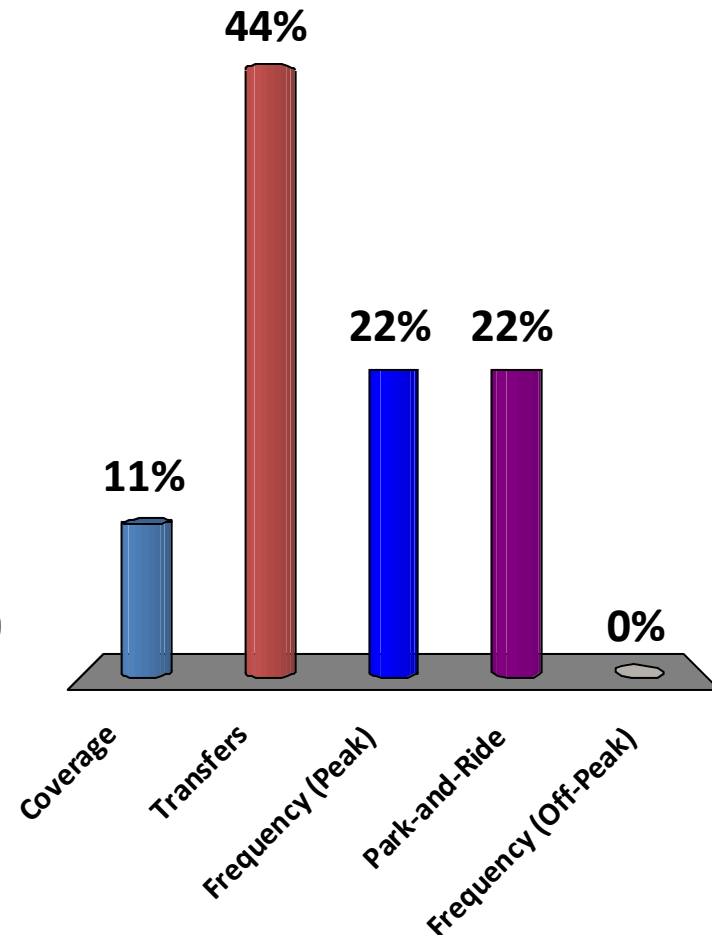
## Route 925: DART service area of Newport Hills, Newcastle, and Factoria

- Boarding per Platform Hour = 1
- Cost per Boarding = \$135



# What is the number one requested improvement among current transit riders in Bellevue?

1. Coverage
2. Transfers
3. Frequency (Peak)
4. Park-and-Ride
5. Frequency (Off-Peak)



# Priorities of Respondents Overall & Bellevue Residents Who Use Transit

Quality of Service	All		Bellevue Resident	
	Count	Percent	Count	Percent
Increase Frequency During Peak	643	33.2%	149	22.8%
Increase Frequency to Reduce Overcrowding	249	12.9%	74	11.3%
Increase Vehicle Capacity at Park & Rides	183	9.5%	65	9.9%
Other	168	8.7%	54	8.3%
Increase Frequency During Midday	152	7.9%	58	8.9%
Revise Schedules to Improve Connections	131	6.8%	44	6.7%
Expand Service Coverage in Bellevue	114	5.9%	71	10.9%
Install Additional Shelters	60	3.1%	30	4.6%
Increase Frequency on Weekends	50	2.6%	30	4.6%
Extend Service at Night on Weekends	48	2.5%	20	3.1%
Increase Frequency During Late Night	47	2.4%	22	3.4%
Expand ORCA Sales Locations in Bellevue	41	2.1%	18	2.8%
Extend Service at Night on Weekdays	32	1.7%	13	2.0%
Increase Bicycle Capacity at Park & Rides	18	0.9%	6	0.9%
	<b>respondents</b>	<b>1,936</b>	<b>654</b>	



**28,000**

**Increase in population between 2010 and 2030**  
**- *Bellevue PCD Department***

**54,000**

**Increase in jobs between 2010 and 2030**  
**- *Bellevue PCD Department***



Meydenbauer Bay

Old Bellevue

Downtown Park

Bellevue Square

Bellevue Way

Compass Plaza

Main Street

NE 12th St

King County Regional Library

City Hall

Convention Center

I-405





**1,219,965**

**2010 daily person trips to/from/inside Bellevue  
- *BKR travel demand model (MP0r12.1)***

**1,750,539**

**2030 daily person trips to/from/inside Bellevue  
- *BKR travel demand model (MP0r12.1)***

**46,300**

**Spring 2012 daily transit ons/offes in Bellevue  
- *King County Data***



# 136,000

**2030 daily ons/offers in Bellevue**

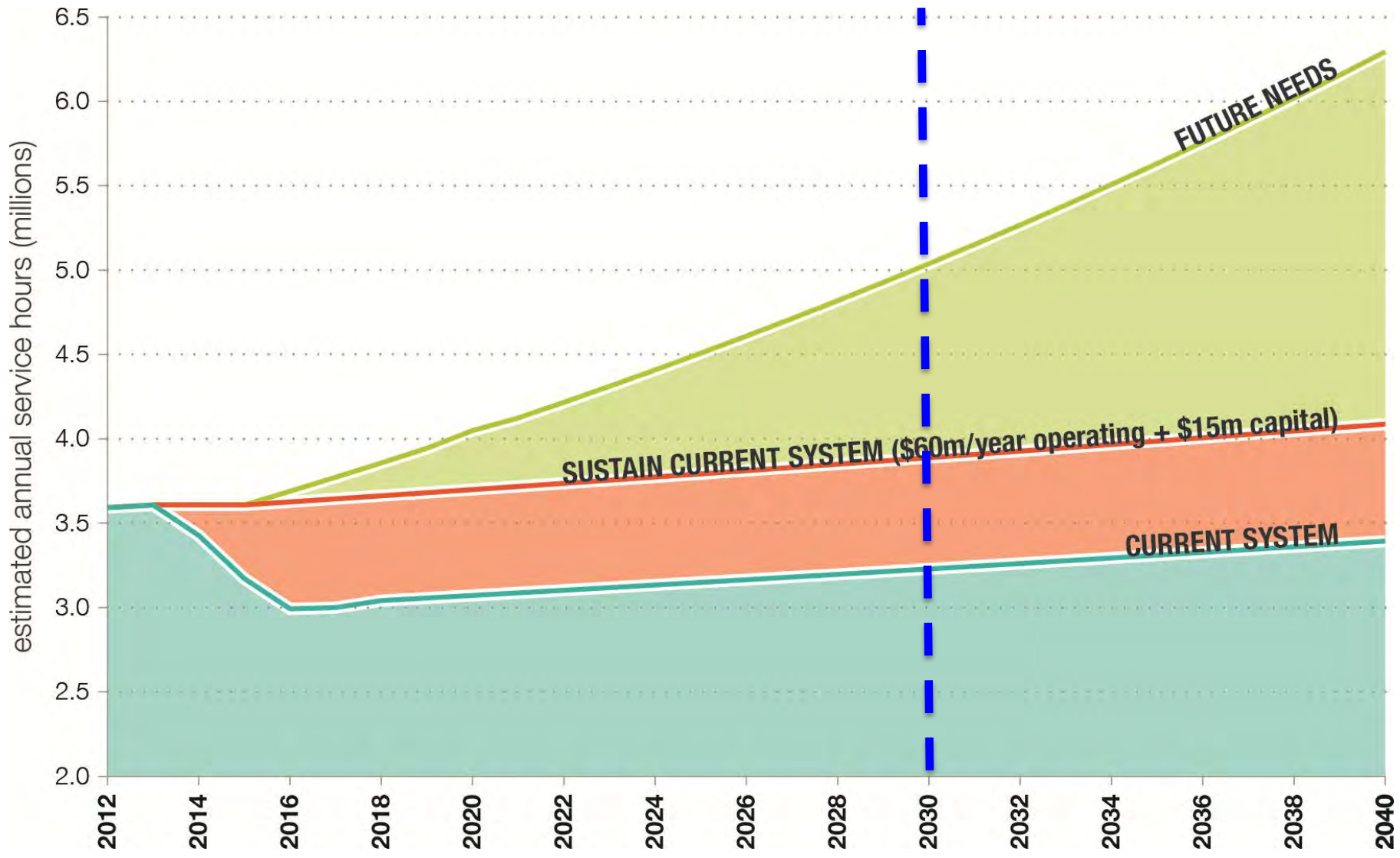
***- BKR travel demand model (platform MP30r6.2)***

# 28,000

**2030 daily ons/offers at Bellevue LRT Stations**  
**- *BKR travel demand model (platform MP30r6.2)***

# 108,000

**2030 daily bus usage (ons/off) in Bellevue**  
**- *BKR travel demand model (platform MP30r6.2)***



# Trade-Offs

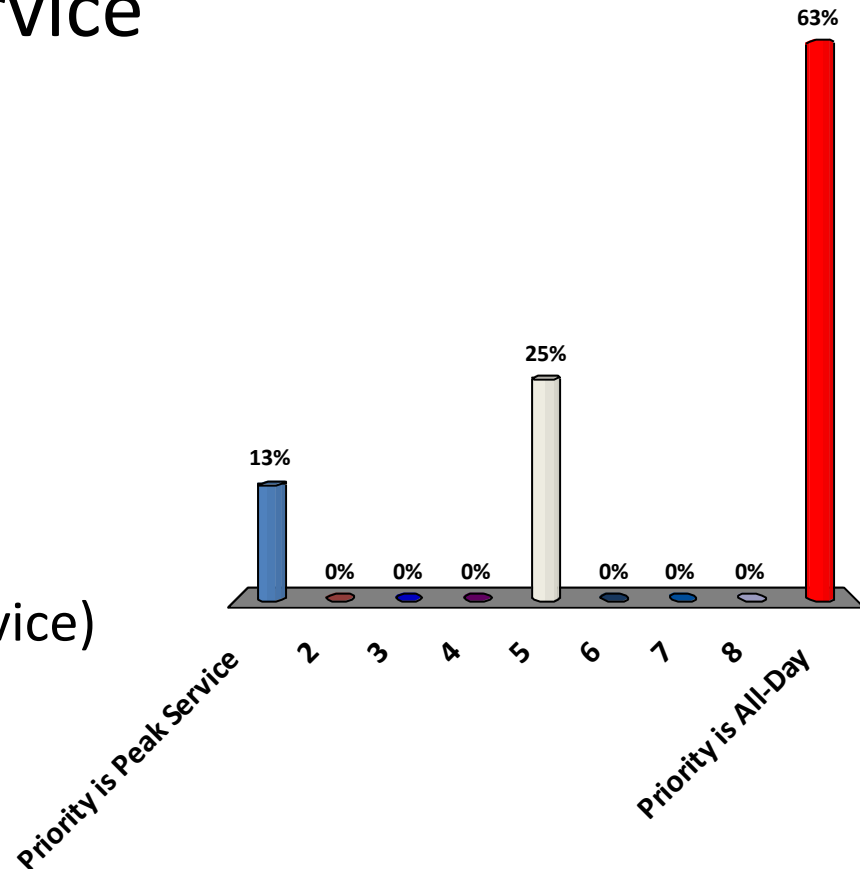
**When we invest in transit, we have to make choices. Here are a few tough choices on which we'd like your opinion.**

# Should investments focus on peak period commuter service, or on building a network that runs all-day?

1. Priority is Peak Service



9. Priority is All-Day  
(evening and weekend service)

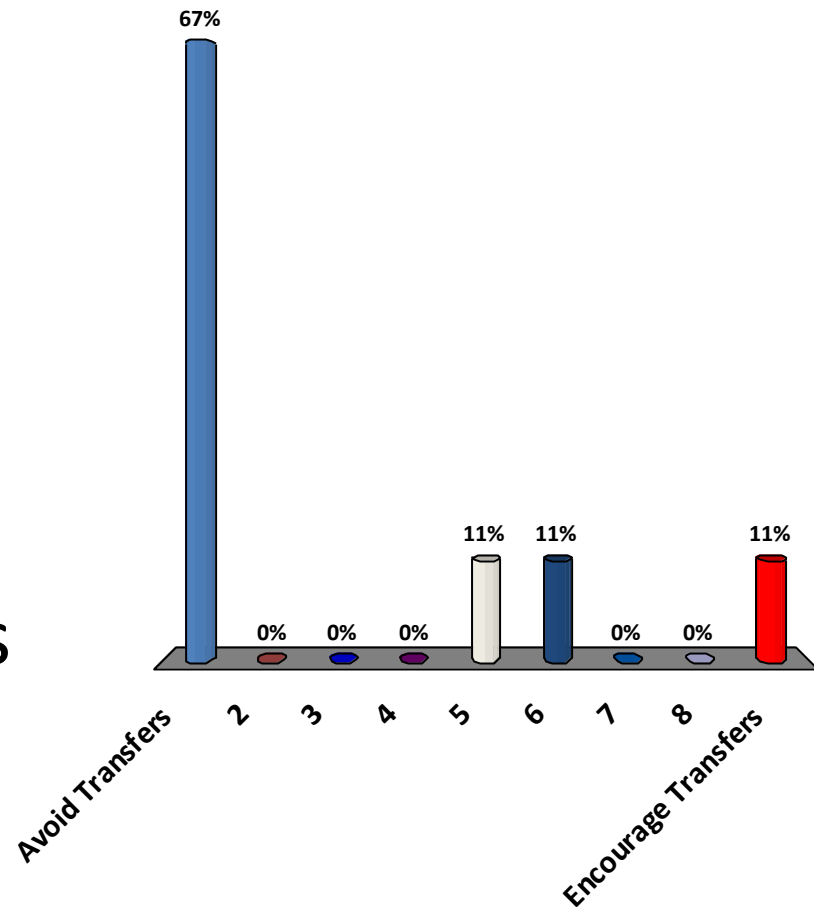


# During peak commute, should we focus on running direct service from many places to each commute destination, or can we ask people to transfer?

1. Avoid Transfers



9. Encourage Transfers

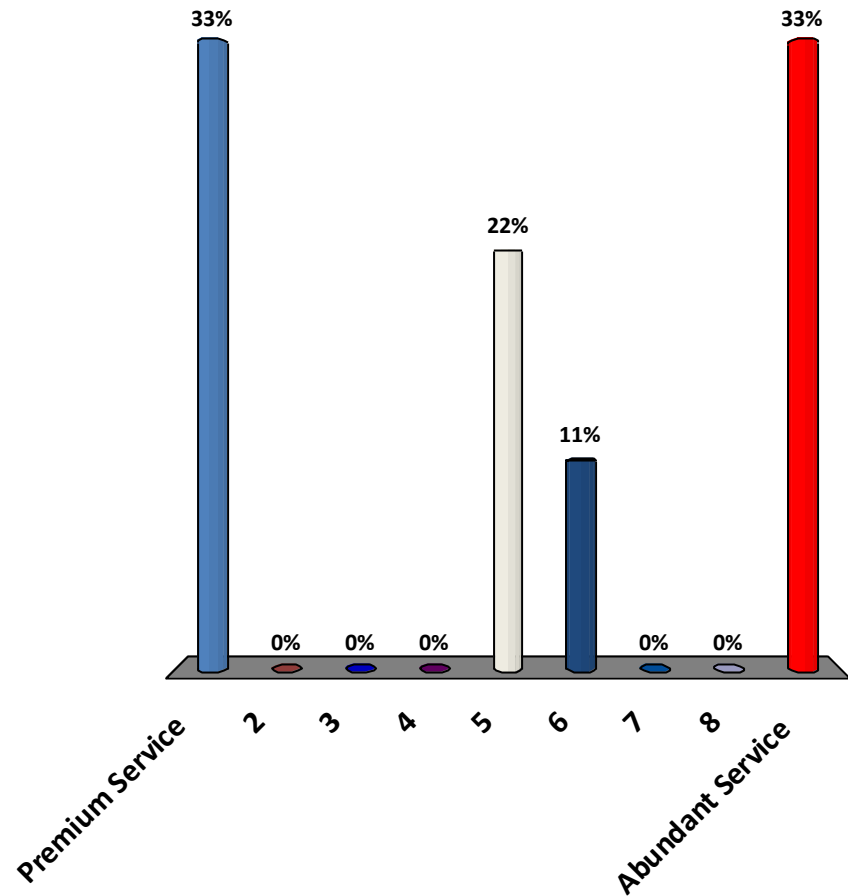


# Should we focus more on investments that make service more attractive to higher end markets or focus on making service as abundant as possible?

1. Premium Service



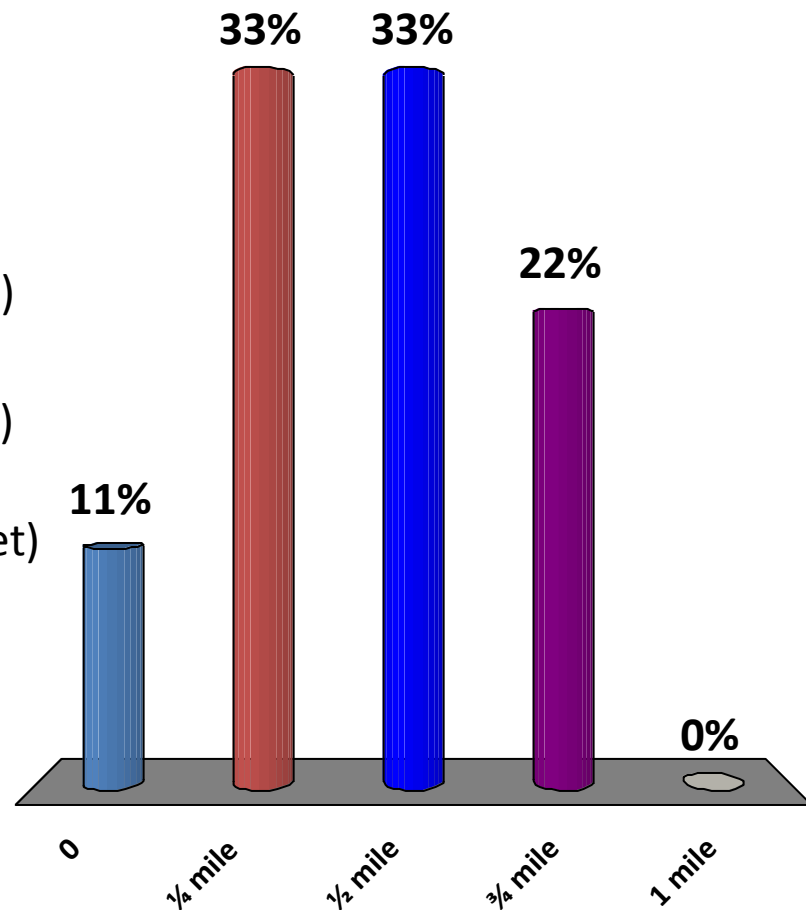
9. Abundant Service





# How close to a home or job is close enough to count as being served (assuming decent sidewalks and service worth walking to)?

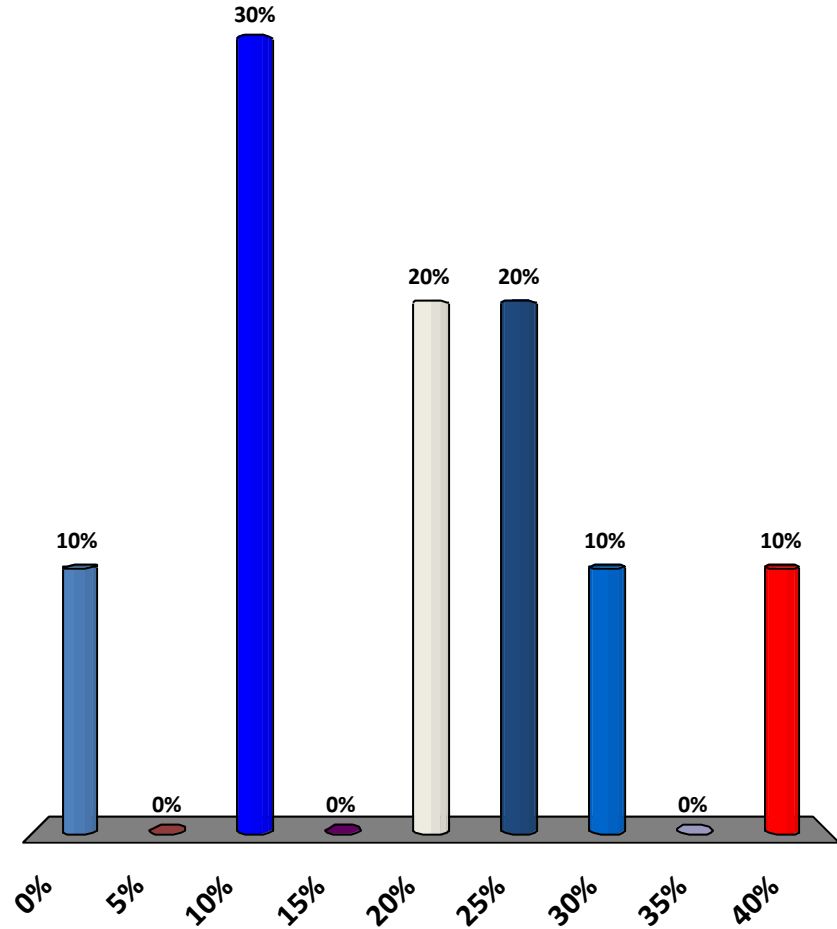
1. 0
2.  $\frac{1}{4}$  mile (Main to 4th Street)
3.  $\frac{1}{2}$  mile (Main to 8th Street)
4.  $\frac{3}{4}$  mile (Main to 12th Street)
5. 1 mile



# What % of the population is it OK not to serve?

1. 0%
2. 5%
3. 10%
4. 15%
5. 20%
6. 25%
7. 30%
8. 35%
9. 40%

← We Are Here



# Next Steps

- 1. Service Element completed by end of April 2013.**
- 2. Capital and Policy Elements commence in May 2013.**
- 3. TMP project completed by end of 2013.**

# Additional Information



**Franz Loewenherz**

Transportation Department

[floewenherz@bellevuewa.gov](mailto:floewenherz@bellevuewa.gov)

**425-452-4077**

<http://www.bellevuewa.gov/bellevue-transit-plan.htm>