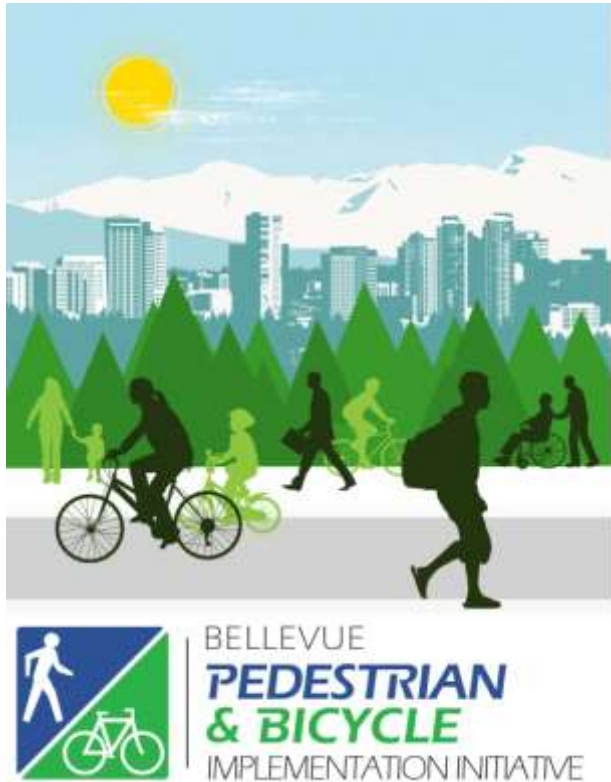


Downtown Bellevue Demonstration Bikeway Project

City Council – February 5, 2018



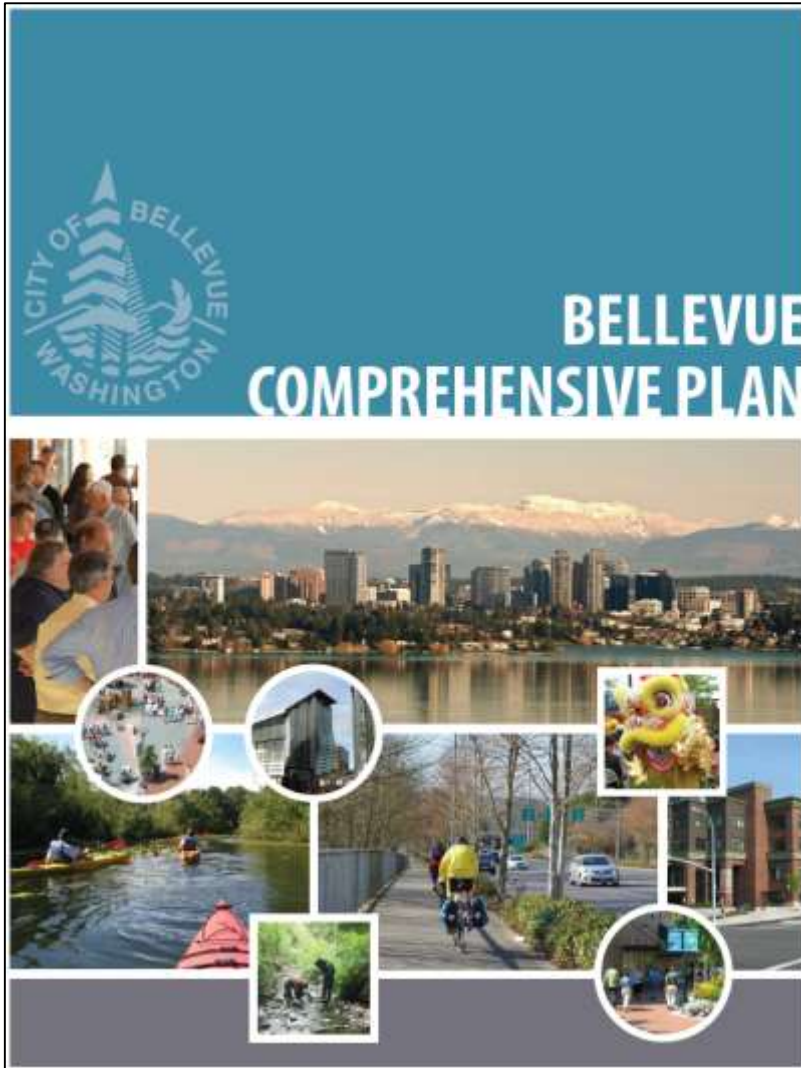
David Berg, Director
Franz Loewenherz, Principal Planner
Chris Long, Engineering Manager
Transportation Department

Lei Wu
Transportation Commissioner

Meeting Purpose

- **Update on implementation of a Downtown demonstration bikeway project.**
- **No Council Action is sought at this time.**

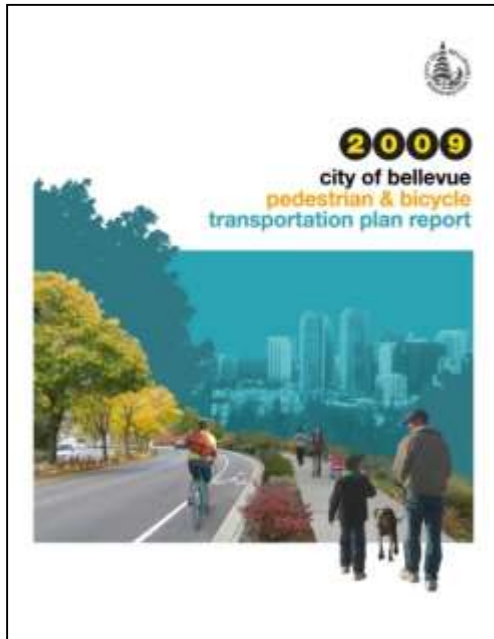
2015 Comprehensive Plan



“Building and maintaining a seamless network of walkways, bikeways, and off-street trails requires a coordinated effort that is documented in the Pedestrian and Bicycle Transportation Plan and the Pedestrian and Bicycle Implementation Initiative.”

- Transportation Element

2019 Target | Citywide Corridors



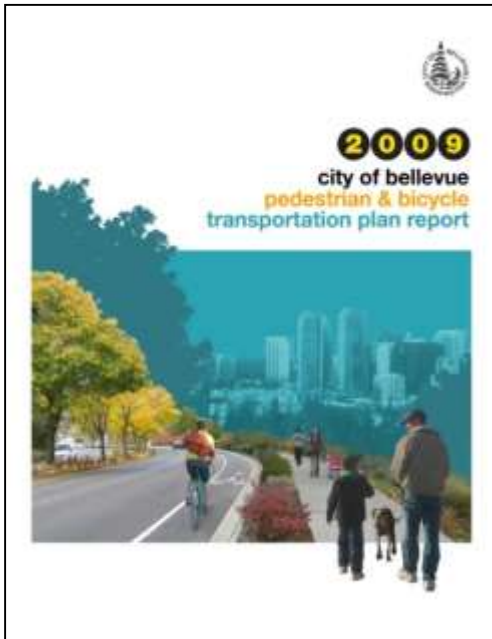
Ordinance No. 5861
(2/17/2009)



“Within 10 years, implement at least two completed, connected, and integrated north-south and at least two east-west bicycle routes that connects the boundaries of the city limits, and connects to the broader regional bicycle system.”

- 2009 Pedestrian & Bicycle Transportation Plan

2014 Target | Downtown Corridors



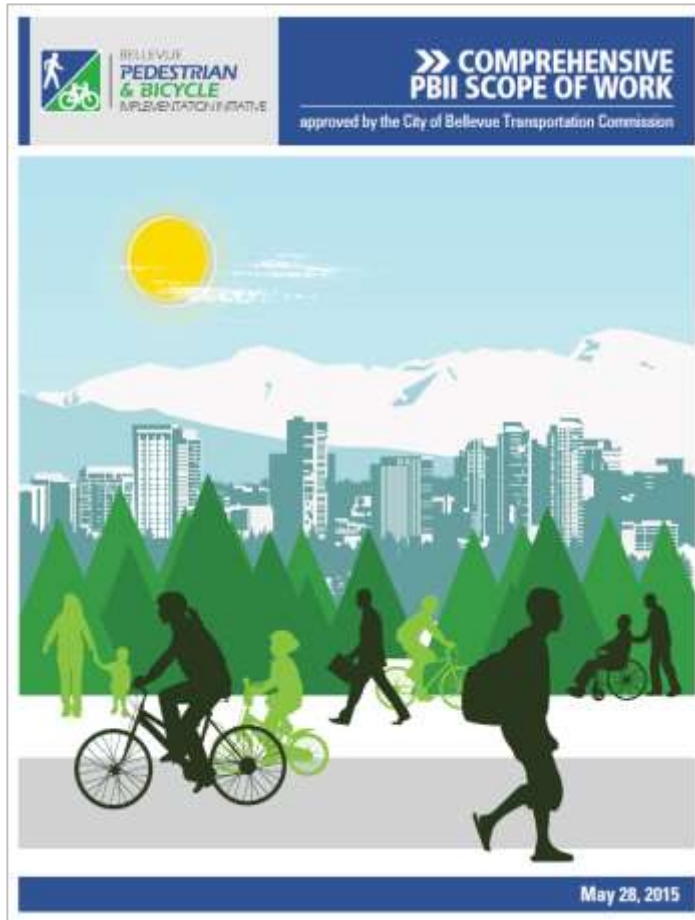
Ordinance No. 5861
(2/17/2009)



“Within 5 years, implement at least one completed and connected east-west and north-south bicycle route through Downtown Bellevue.”

- 2009 Pedestrian & Bicycle Transportation Plan

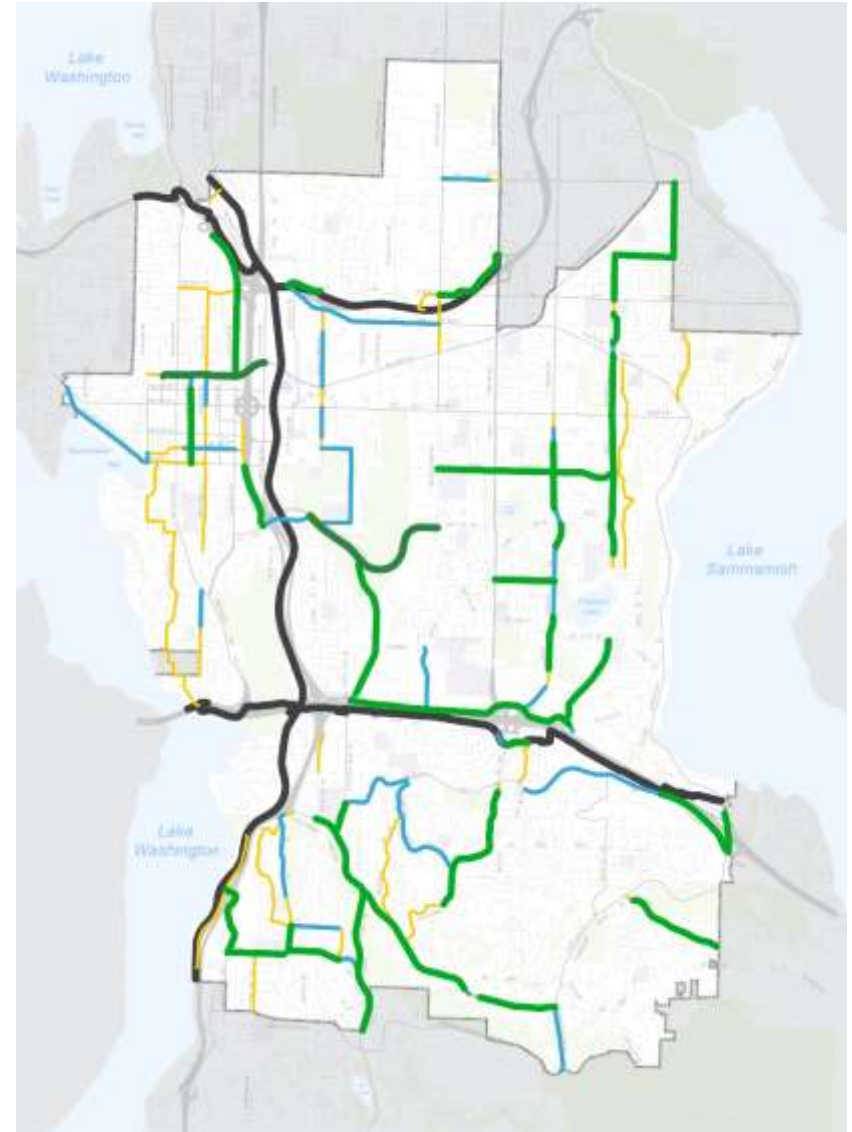
PBII Scope of Work



“Advances demonstration projects that test experimental facility design treatments.”

“Identifies early-win opportunities that can be implemented quickly to advance project delivery.”

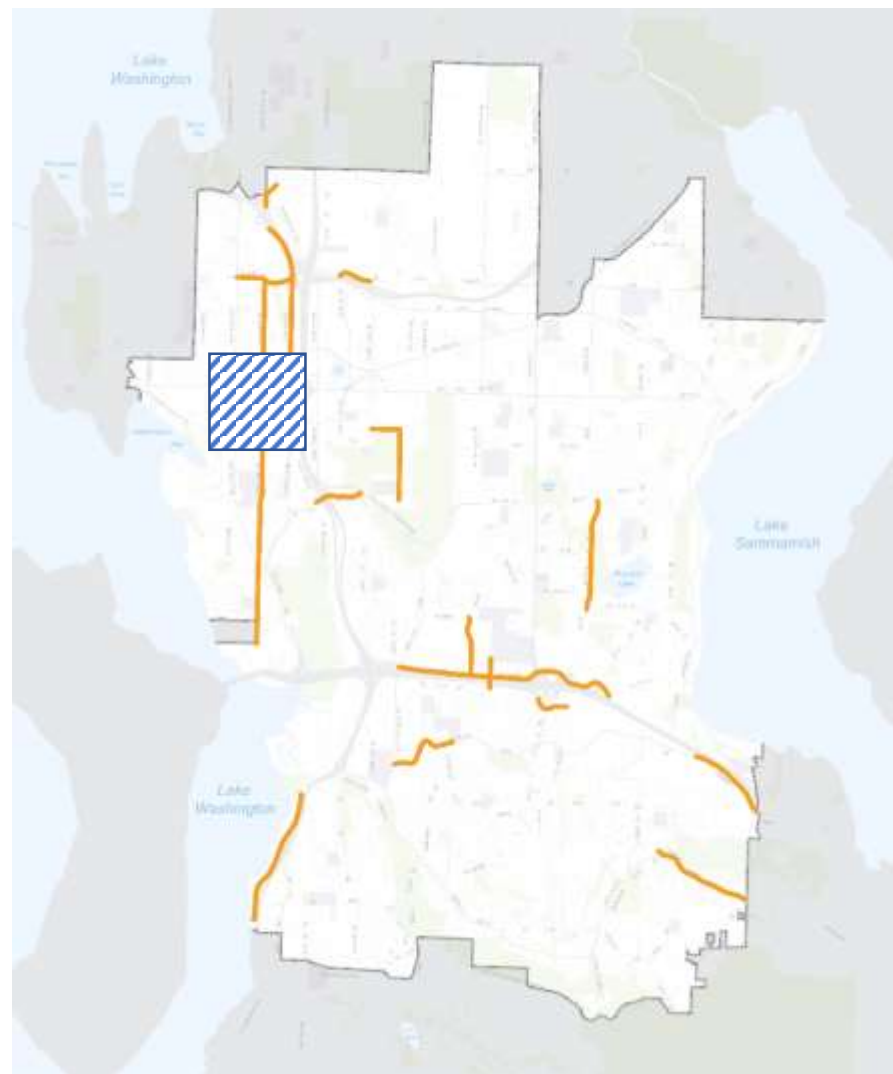
BRIP | Connected + Protected + Rapid



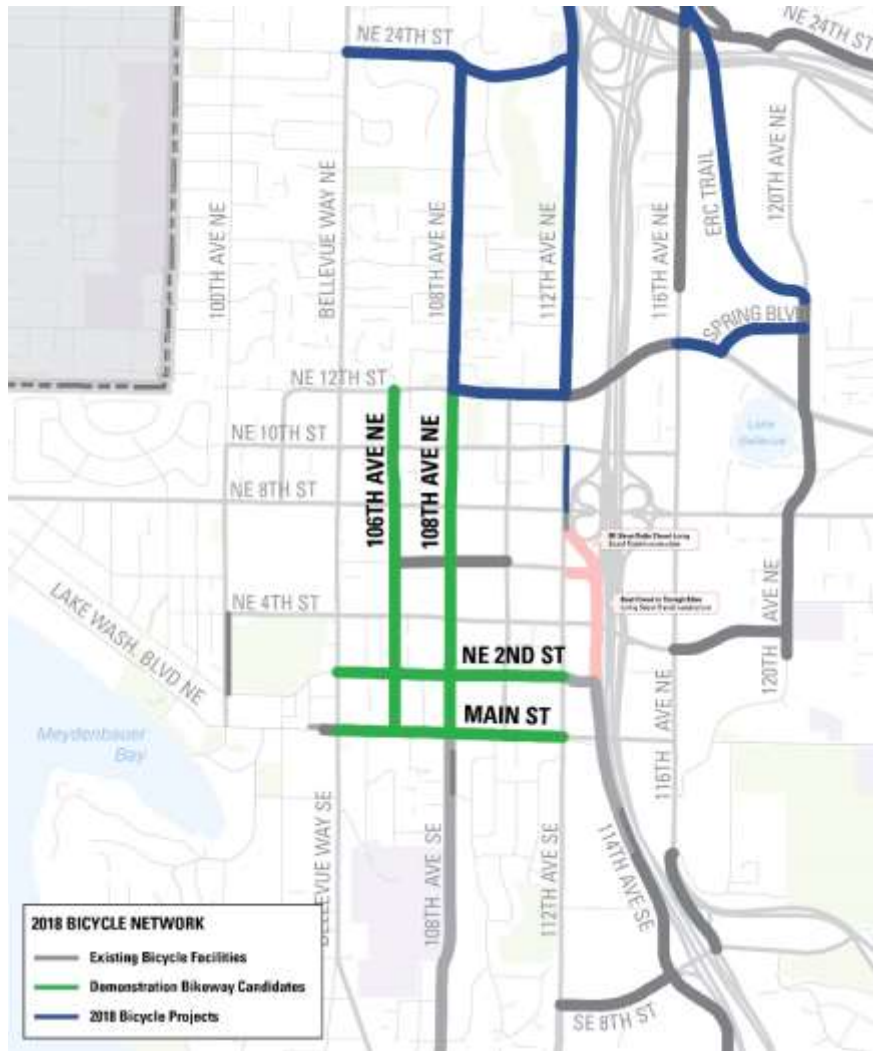
2017-2018 Bicycle Projects



In 2017-2018, the BRIP program will leverage roughly \$1.7M of funding from the Transportation Levy.



Downtown Bicycle Network Candidate Corridors



- **108th Ave NE**
Main St to NE 12th St
- **Main St**
105th Ave to 112th Ave
- **NE 2nd St**
Bellevue Way NE to 110th Ave NE
- **106th Ave NE**
Main St to NE 12th St

2017 BDA Consultation



BDA Transportation Committee conducted an internal review, discussion, and drove consensus on a recommendation.

BDA Evaluation Criteria

Safety

- Collisions (2010-2016)
- Wikimap Safety Issues

Bicycle Environment

- Existing Bike Network Connections
- Bike Facility Comfort
- Construction Activity

Auto Environment

- Travel Lanes Repurposed
- Turn Lanes Repurposed

Curbside Environment

- Changes to On-Street Parking
- Loading/Unloading

Transit Environment

- Bus Operations
- Transit Access

Outreach Activities



We want to hear from you!

The Transportation Department is working to make Downtown Bellevue a safe, comfortable, attractive place for people to bike.

We could install Downtown's first high-comfort bikeway as a pilot project in 2018. Help pick the street and design that balances the community's priorities.

Learn about the benefits and trade-offs of concepts along four candidate streets: 108th Ave NE, 100th Ave NE, Main St, NE 2nd St.

Attend the Open House:
Thursday / November 30 / 5-7 PM
Bellevue City Hall / 450 110th Ave NE

Take the Survey:
<http://www.surveymonkey.com/2/BvveBikeDieta>
Available through December 31

Information: 425-452-6800
www.bikebellevue.com

For more information contact Franz Lammertner at 425-452-4077 or flammert@bellevuewa.gov

Postcard Mailer



“Pop-Up” Events



Downtown Bellevue Bike Bikeway Project Survey

This Transportation Department is working to make Downtown Bellevue a safe and comfortable place for people to bike. The City Council is asking you to help us decide which streets to make safe and comfortable for people to bike on. We will install a high-comfort bikeway as a pilot project in 2018. Help pick the street and design that balances the community's priorities.

Learn about the benefits and trade-offs of concepts along four candidate streets: 108th Ave NE, 100th Ave NE, Main St, NE 2nd St.

Attend the Open House:
Thursday / November 30 / 5-7 PM
Bellevue City Hall / 450 110th Ave NE

Take the Survey:
<http://www.surveymonkey.com/2/BvveBikeDieta>
Available through December 31

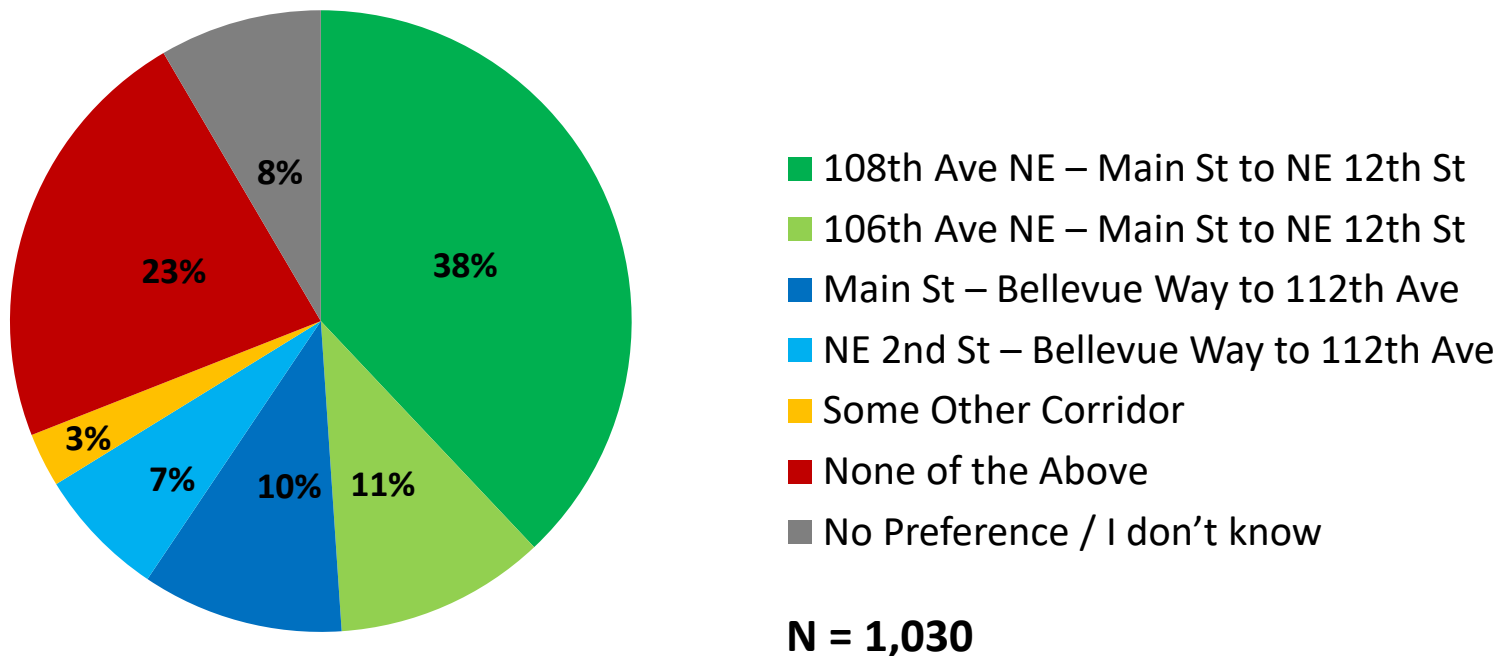
On-Line Survey



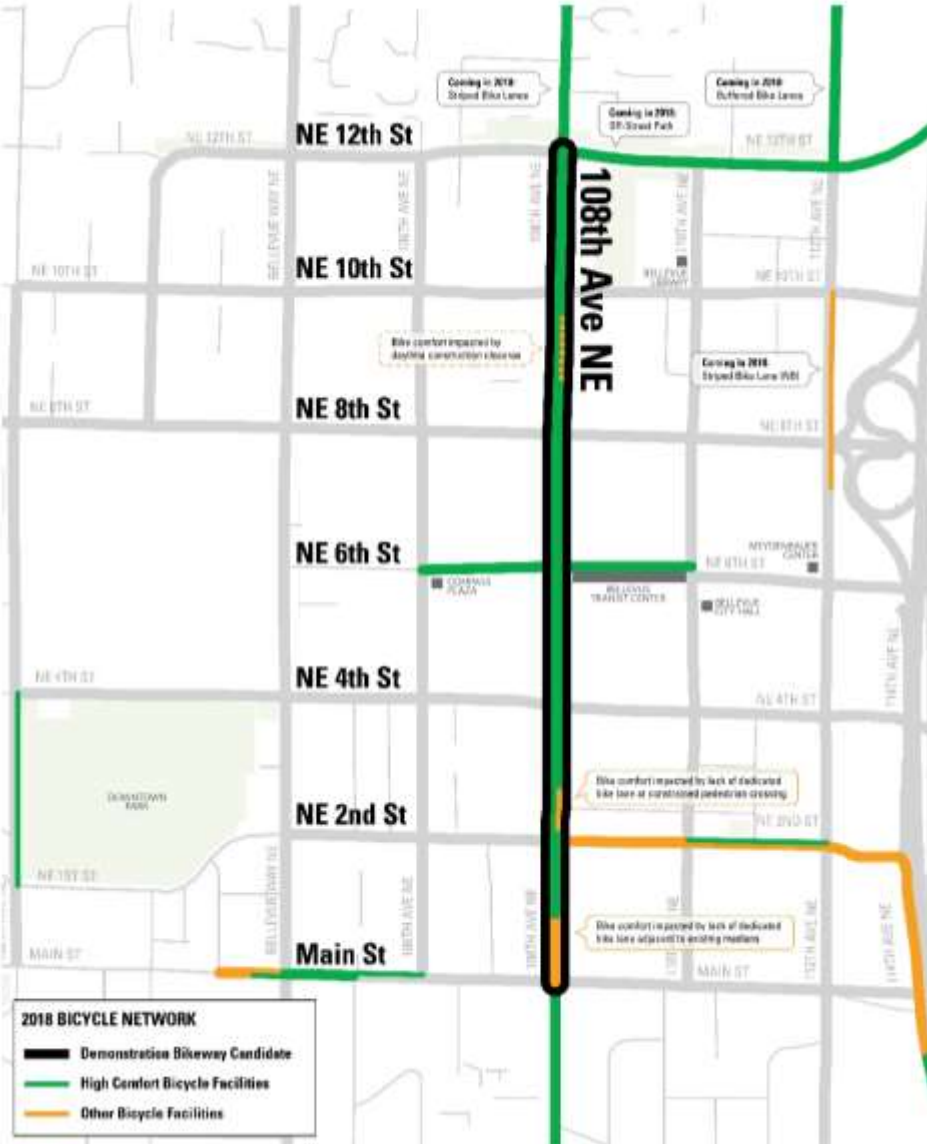
Open House

Downtown Demonstration Bikeway Survey

On which street would you prefer to see a demonstration bikeway installed in 2018?



108th Avenue NE (Main Street to NE 12th Street)



CONCEPT AT NE 6TH ST (BELLEVUE TRANSIT CENTER), LOOKING NORTH



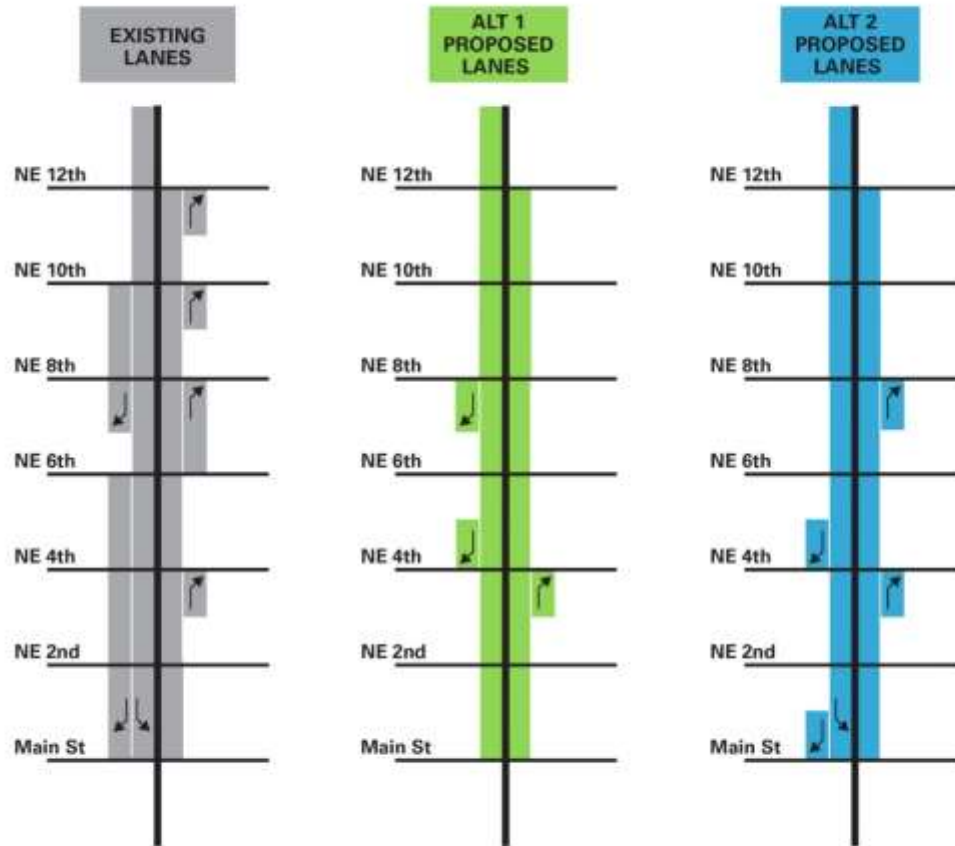
CONCEPT AT MAIN ST, LOOKING NORTH



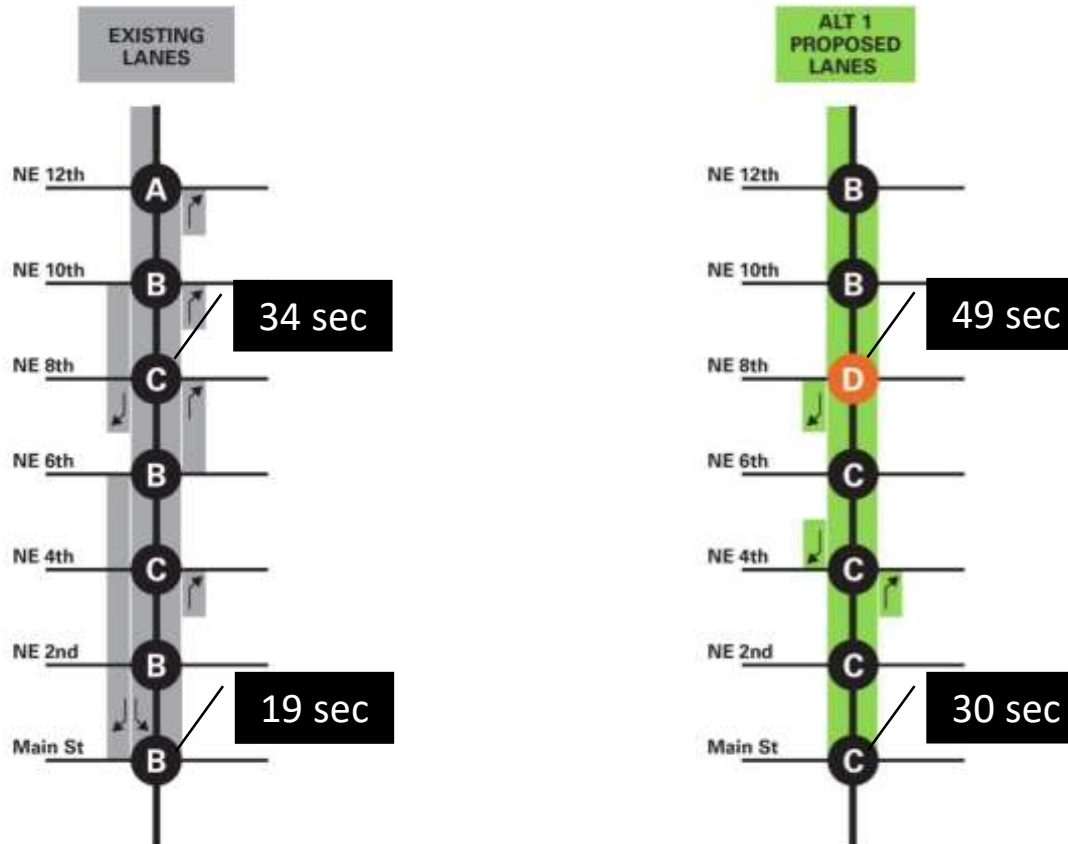
Business Support



108th Avenue NE | Design Options



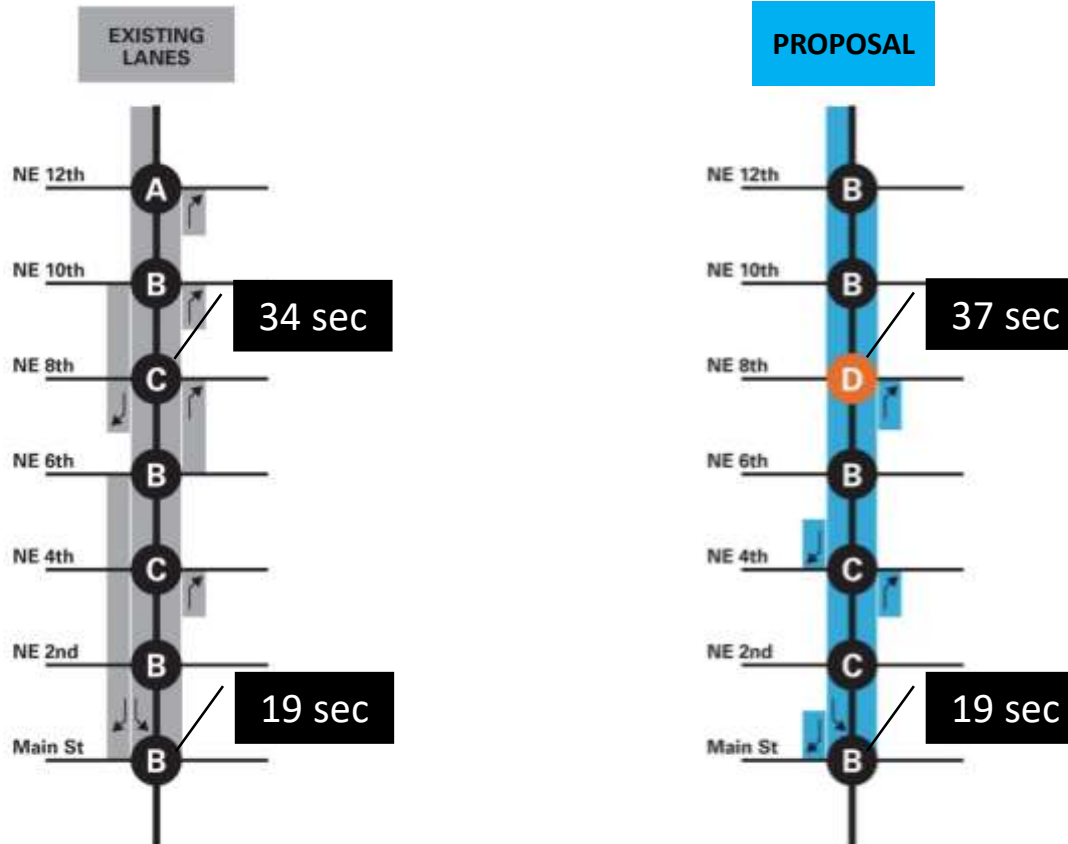
108th Avenue NE | Intersection LOS



Note: PM peak hour intersection level of service (seconds/vehicle).

Source: Synchro Simulation Model

108th Avenue NE | Intersection LOS



Note: PM peak hour intersection level of service (seconds/vehicle).

Source: Synchro Simulation Model

108th Avenue NE Demonstration Bikeway Project

On January 11 the Transportation Commission voted five in favor and two opposed in proceeding with implementing the downtown demonstration bikeway project.



Citywide Bike Share Pilot Program

On March 8 the Transportation Commission will consider the implementation of a citywide bike share pilot program.



Project Timeline



For More Information



BELLEVUE
**PEDESTRIAN
& BICYCLE**
IMPLEMENTATION INITIATIVE

Franz Loewenherz

Transportation Department

floewenherz@bellevuewa.gov

425-452-4077