



West Lake Sammamish Parkway – Phase 2 Transportation Commission Project Update

January 11, 2018

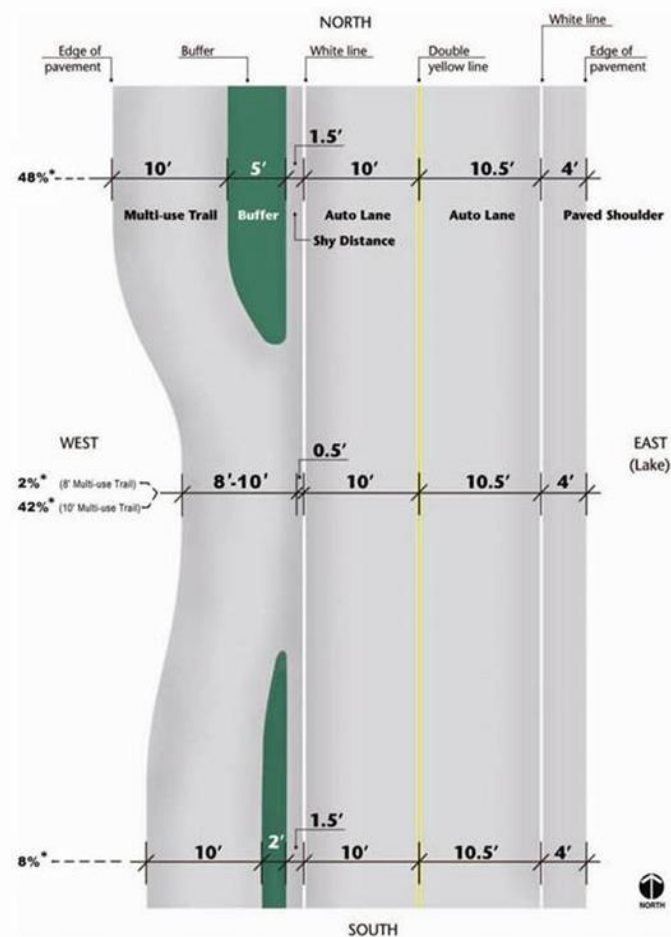
City Hall

Paul Krawczyk, Trans. Dept. / Scott Johnson, HDR



Presentation Agenda

- Project History
- Presentation Goals
- Phased Construction of WLSP
- Acceleration of Phase 2
- Sighting Considerations
- Scoring and Sighting
- Findings
- Next Steps / Finalize Scope
- Project Schedule
- Questions



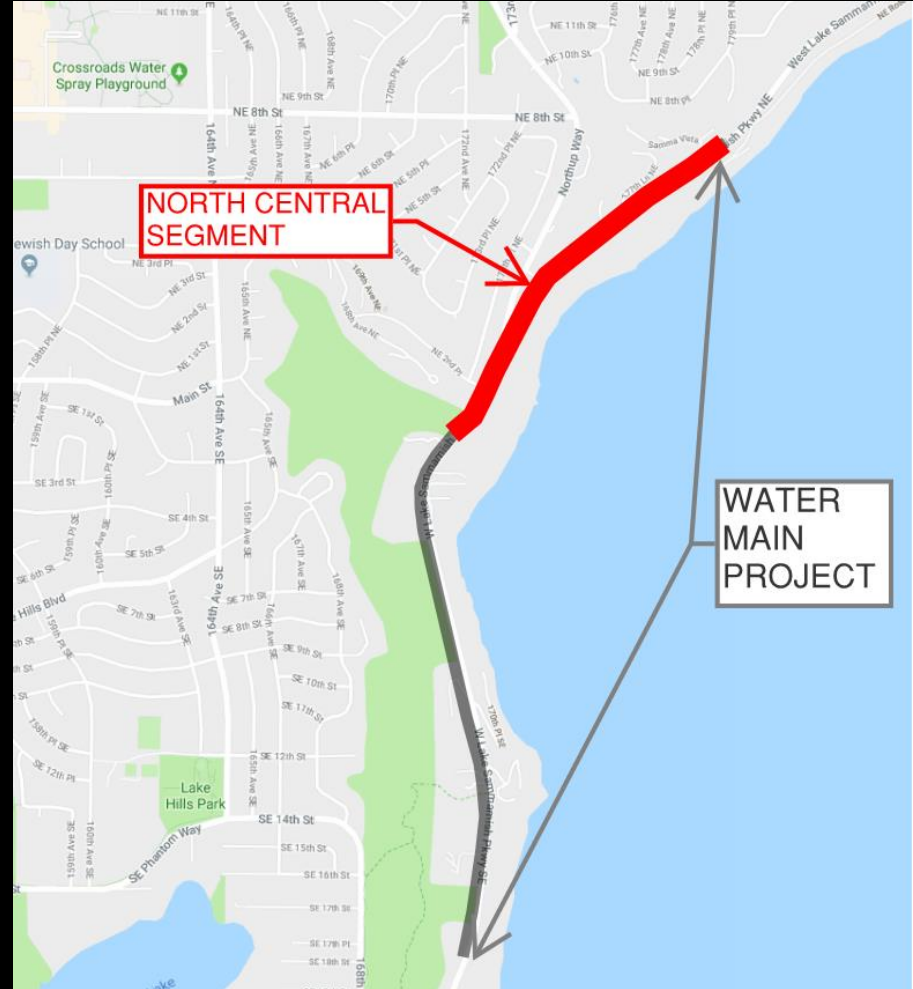
* Percents shown indicate approximate length of the overall West Lake Sammamish Parkway corridor where each type of section shown may be applied. Percents do not include driveways or side streets.

Project History – WLSP Phase 2

- 2005 Council Adoption of Roadway Cross-section w/Multi-Use Path
- 2013 - Phase 1 Project Completed (I-90 to SE 34th Street)
- January 2017 - Utility Dept. Begins Watermain Replacement Project Design
- May 2017 – Transportation Dept. Receive Direction to Accelerate WLSP Phase 2
- June 2017 to October 2017 – Develop 5% Phase 2 Roadway Design Plans
- Project Recommendation Memo – December 2017

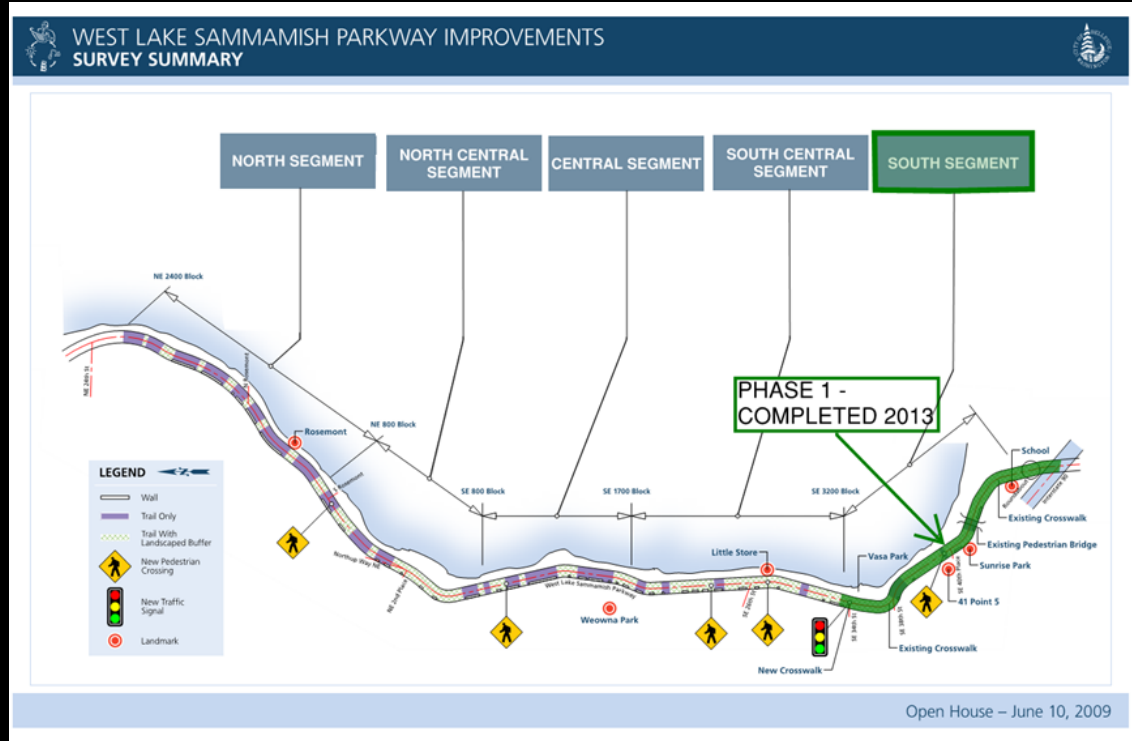
Presentation Goals

- Update Commission on the Proposed Location of WLSP Phase 2 Project
 - SE 200 Block to NE 800 Block (Includes intersection of Northrup Way and WLSP)
- No Action Required



Phased Construction (Developed in 2009)

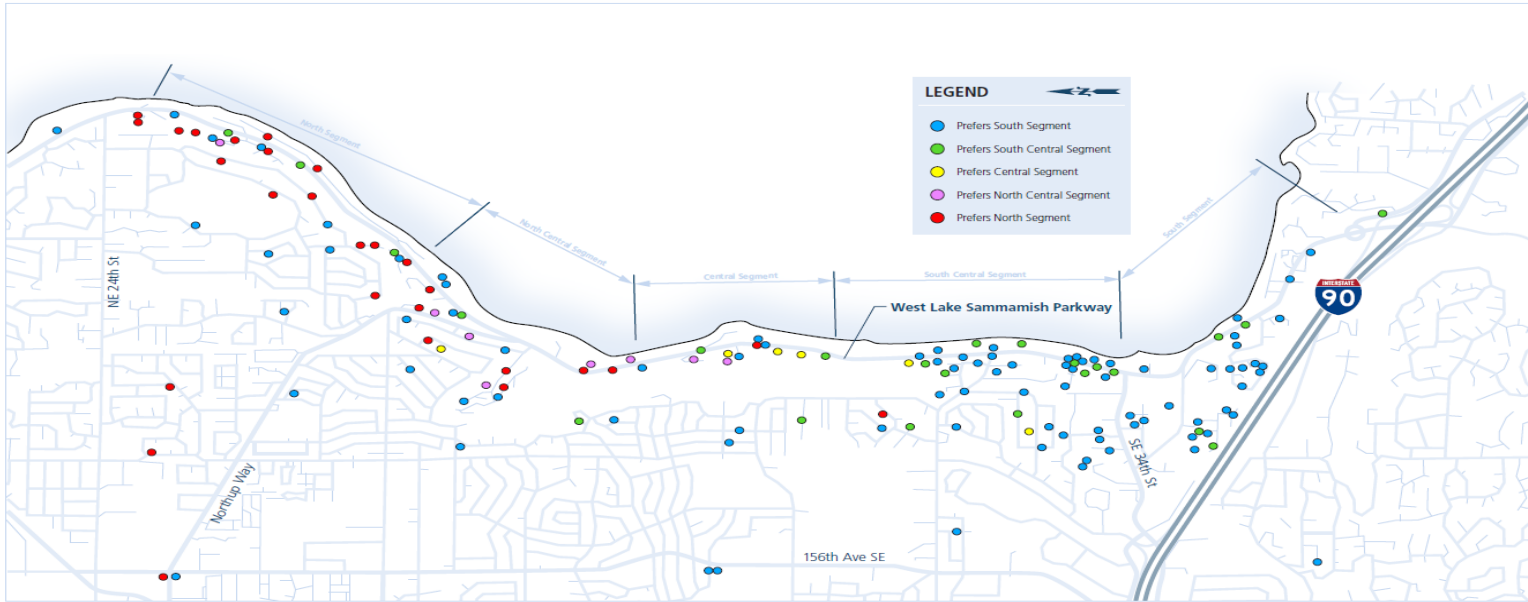
- WLSP divided into 5 Segments
 - Approx. 1 – mile per segment
 - North Segment
 - North Central Segment
 - Central Segment
 - South Central Segment
 - South Segment (Completed)
- Approx. \$12 to \$15 Million per mile



Public Involvement



WEST LAKE SAMMAMISH PARKWAY IMPROVEMENTS SURVEY SUMMARY

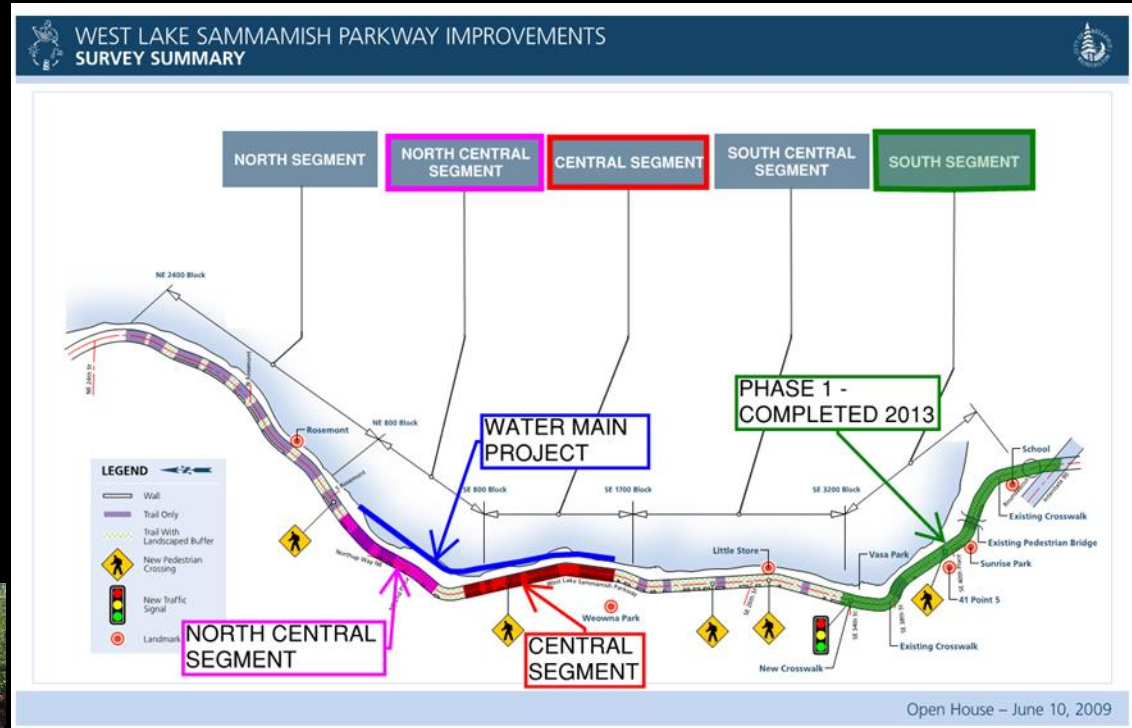


Open House – June 10, 2009



Acceleration of Phase 2

- Funds Accelerated to 2018
 - \$8 Million Trans. CIP Budget
- Combine with Utility Project
 - Economy of Scale
 - Minimize Impact to Public
 - Traffic Detours
 - Construction Duration
 - Efficiencies in Construction
- Potential Segments
 - North Central
 - Central



Sighting Considerations

- Determine Best Fit Segment
 - Critical Area Impacts
 - Pavement / Subgrade Soil Condition
 - Structures
 - Driveways



Scoring and Sighting

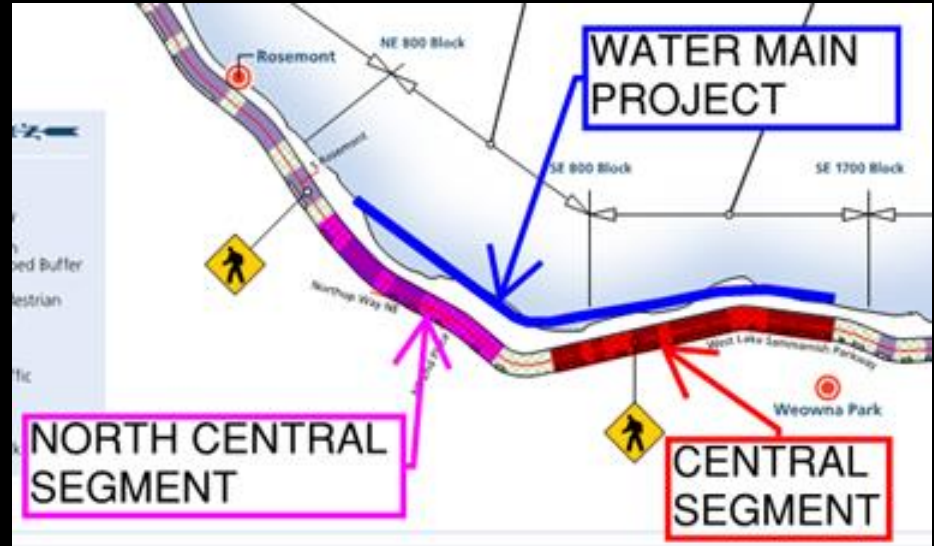
City of Bellevue - West Lake Sammamish Parkway Phase 2

Segment Ranking Matrix

	Risk		Proposed Project South	Proposed Project North
	Schedule	Cost	100+00 - 145+00	150+00 - 198+50
			4850	4850
1) Wetland Buffer		X	3	1
2) Critical Areas / Steep Slopes		X	3	1
3) Driveway Access Points		X	2	2
4) Retaining Walls	X	X	2	2
5) Unsuitable Subgrade	X	X	3	2
6) Contamination Cleanup		X	1	1
7) Properties Requiring TCE	X		3	2
Total Risk Points			17	11

Findings

- North Central Segment Advantage
 - Located within the Watermain and Force Main Workzone
 - Minor Wetland Buffer Impacts
 - Better Subgrade than Central Segment
 - Retaining Walls Less than 6-feet Tall
 - Lower Number of Driveways with TCE's Required
- Central Segment Disadvantage
 - High Risk to Subgrade
 - Retaining Walls Extensive to Provide Buffer
 - Higher Number of Driveways with TCE's Required



Next Steps / Finalize Scope

- City Council Concurrence and Direction
 - Early February 2018
- Community Update
 - End of February 2018
- Start Design of Combined Utility and Roadway Project
 - March 2018



Here's what's happening

October 2017

West Lake Sammamish Parkway, Phase 2 Environmental & Geotechnical Work Ahead

Expect Lane Closures

Project description: The City is currently beginning preliminary design for Phase 2 of the West Lake Sammamish Parkway project. The Phase 2 design will be similar to Phase 1 improvements constructed between I-90 and SE 34th Street and will include a multiuse path on the westside of the Parkway. This preliminary design work will help determine the limits and location of the next phase of West Lake Sammamish Parkway improvements. The Phase 2 roadway improvements will be built within a two-mile long water main replacement project planned for 2018 located between SE 1900 Block and the NE 800 Block.

Preliminary Design Work: The initial work includes identifying the environmental features in the area: ditches, streams and wetlands. Geotechnical explorations are also needed to analyze existing soil and pavement conditions. The utility exploration will identify the location and depth of existing underground utilities.

Geotechnical & Utility Work Happening Soon: To perform the geotechnical work and explore the utilities, one-lane closures of West Lake Sammamish Parkway are needed. We are asking everyone to plan additional time to travel along the Parkway during the initial ground investigation.

Schedule of Roadway Impacts: Single-lane closures will 9 a.m. to 3 p.m., October 9th through the 20th along West Lake Sammamish Parkway between NE 8th Street and SE 19th Street. Safety is our main goal; therefore, please obey the flaggers and posted construction signage.

Questions & Comments: If you have questions or comments, please contact Paul Krawczyk, project manager at 425-452-7905 or pkrawczyk@bellevuewa.gov.

Construction Information Tools: The best way to avoid construction delay is to stay as informed as you can with the use of the following information tools:

- Electronic Message boards: Provides dates or times of upcoming lane or road closures
- Real-time Traffic Map & Cameras: www.bellevuewa.gov/trafficmap
- Traffic Advisories webpage: www.bellevuewa.gov/traffic_advisories.htm
- Follow the Transportation Department on Twitter: @BVueTrans
- Capital Project (Interactive) Map: www.bellevuewa.gov/capital-projects-map.htm
- Sign up for email alerts on project webpages: www.bellevuewa.gov/transportation.htm



TRANSPORTATION

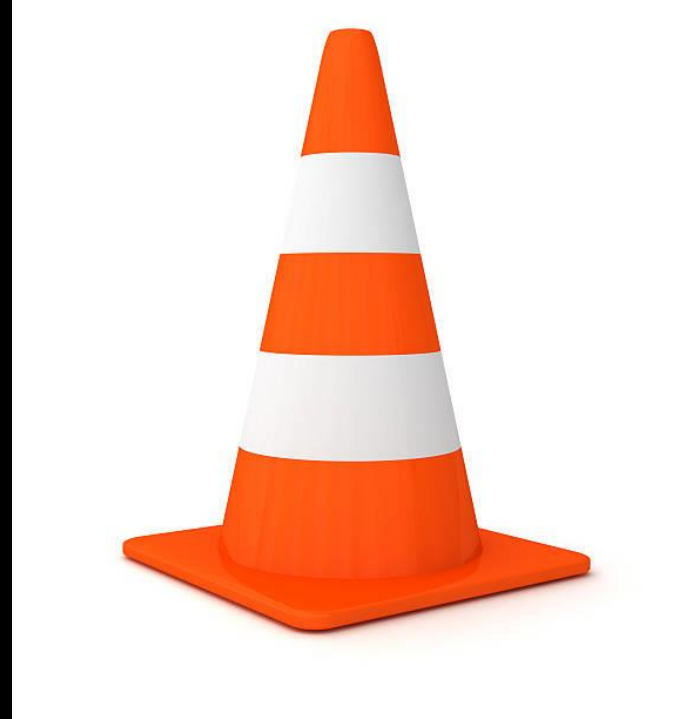


moving in the right direction



Project Schedule

- Approval from Council – February 2018
- Start Design – 1st Quarter 2018
- Complete Design – 4th Quarter 2018
- Start Construction – 1st Quarter 2019
- Construction Completion – Late 2019 / Early 2020





**West Lake Sammamish Parkway – Phase 2
Project Update**

